

## Disabling the System Beep

The information in this tip applies to:

- ToolDesigner and ExpertCAD (all versions)

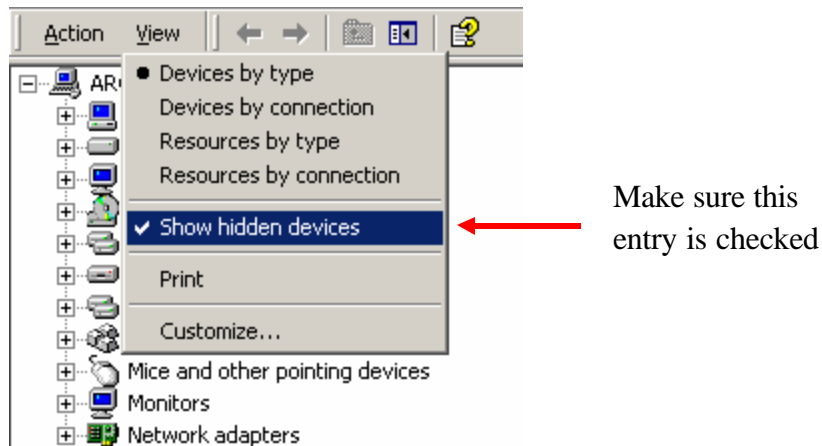
### **SUMMARY**

Disabling the system beep (bell) on your Windows platform.

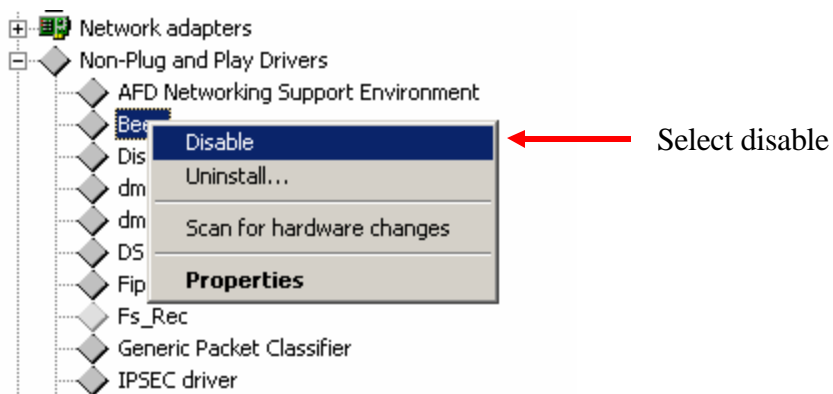
### **MORE INFORMATION**

Follow these steps to turn off the system beep.

1. Log in as Administrator.
2. Open the Device Manager. Start->Control Panel->System. From the posted dialog select the Hardware tab then the Device Manager... button
3. Using the View pull-down menu select Show hidden devices.



4. Under the Non-Plug and Play Drivers, select the Beep entry.
5. Disable this driver by clicking the right mouse button and select disable.



6. Close the Device Manager dialog and restart the machine.