



Station Number Will Not Update

The information in this tip applies to:

- Prospector (all versions)
-

ISSUE


The correct station number is not being displayed on the Tool Selection page of the new program cut wizard in Prospector, even after updating the station number in PowerSource Tooling.

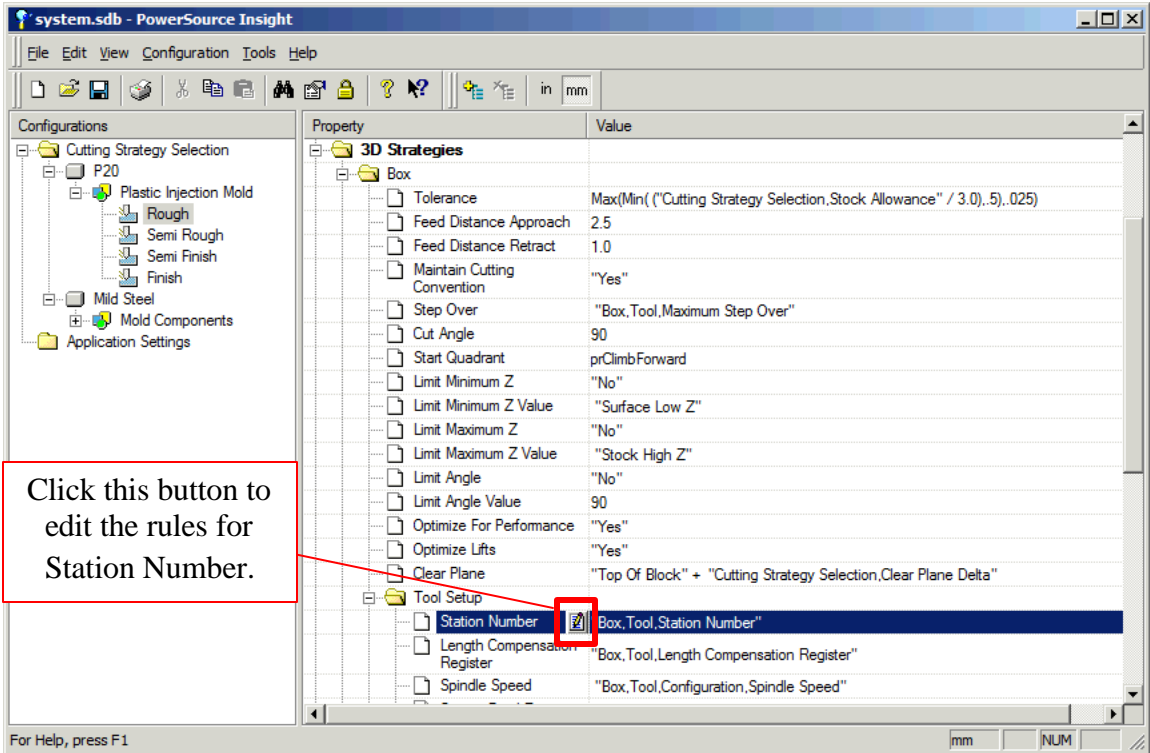
RESOLUTION

Make sure that there are no rules defined in **PowerSource Insight** for the station number. Rules that are defined for the station number in PowerSource Insight will overwrite any station number values you enter in PowerSource Tooling.

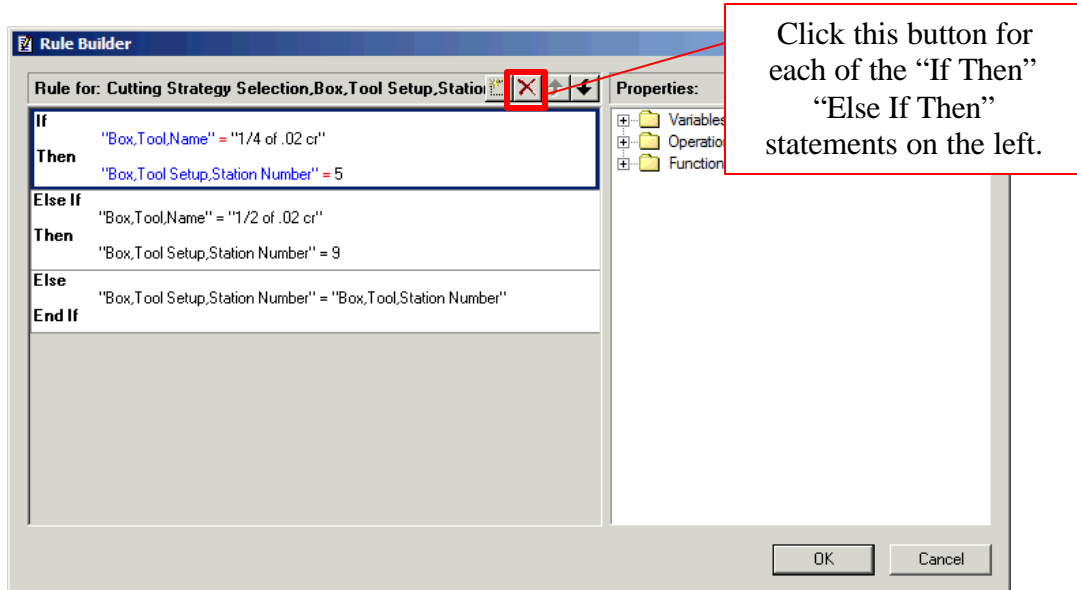
You can remove the station number rules from PowerSource Insight by taking the following steps:

1. Run PowerSource Insight.
2. Click on either in or mm as appropriate.
3. On the left side, expand the material of interest (for example **P20**).
4. Now expand the configuration of interest (for example **Plastic Injection Mold**).
5. Click on the category of interest (for example **Rough**).
6. Expand either **3D Strategies** or **2D Strategies** depending on which cutting strategies you would like to remove the rules for.
7. Expand the cutting strategy of interest (for example **Box**).
8. Now expand the **Tool Setup** folder found underneath the cutting strategy.

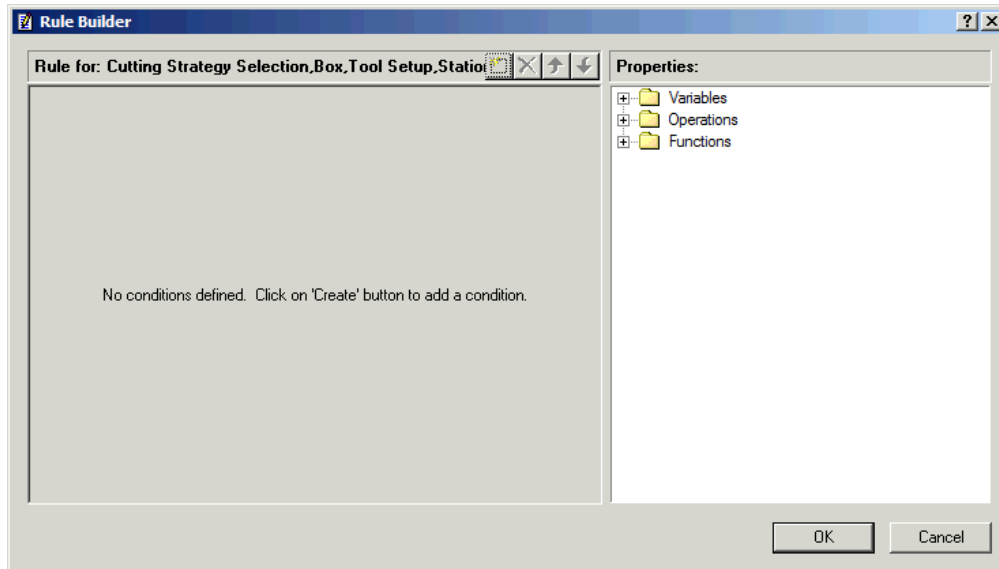
- Click on **Station Number** so that it is highlighted. Now click the Rule Builder  button located next to the **Station Number** text.



- In the Rule Builder dialog, click the delete rule button to remove all the rules associated with the **Station Number**.



11. Once all rules have been deleted, the Rule Builder dialog will look like the following picture.



12. Repeat steps 7 through 11 for any other cutting strategies you wish to remove the station number rules on.

Make sure you save your changes by clicking on **File -> Save** before exiting. Now your station number should appear inside Prospector as it was set in the PowerSource Tooling database.