

PROSPECTOR™

The Gold Standard In Toolmaking

Faster 3D Program Generation - Filtering the Surface

The information in this tip applies to:

- Prospector 6.0 (and above)

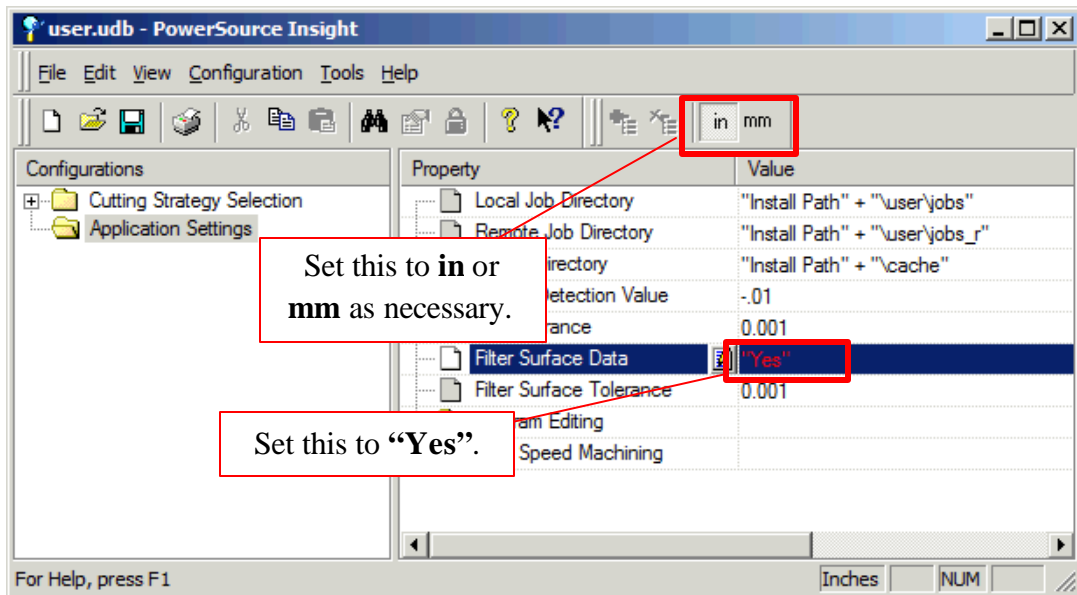
TIP

Filtering the surface model before you work on it can significantly enhance the performance of 3D cutter path generation in Prospector. It is possible to filter the surface model through Prospector.

MORE INFORMATION

To filter the surface model take the following steps before creating your new Prospector project:

1. Open up PowerSource Insight, and click on **Application Settings** in the left pane.
2. Now on the right, set the **Filter Surface Data** property to “Yes”. Make sure you change the property for inches (**in**) and/or millimeters (**mm**) as necessary. See the diagram below.



Now you are ready to create your Prospector project. When you go through the New Project wizard in Prospector, the surface filter will automatically be applied for you.