

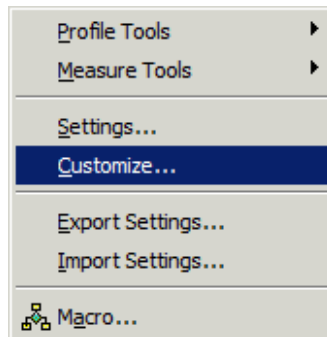
PROSPECTOR™

The Gold Standard In Toolmaking

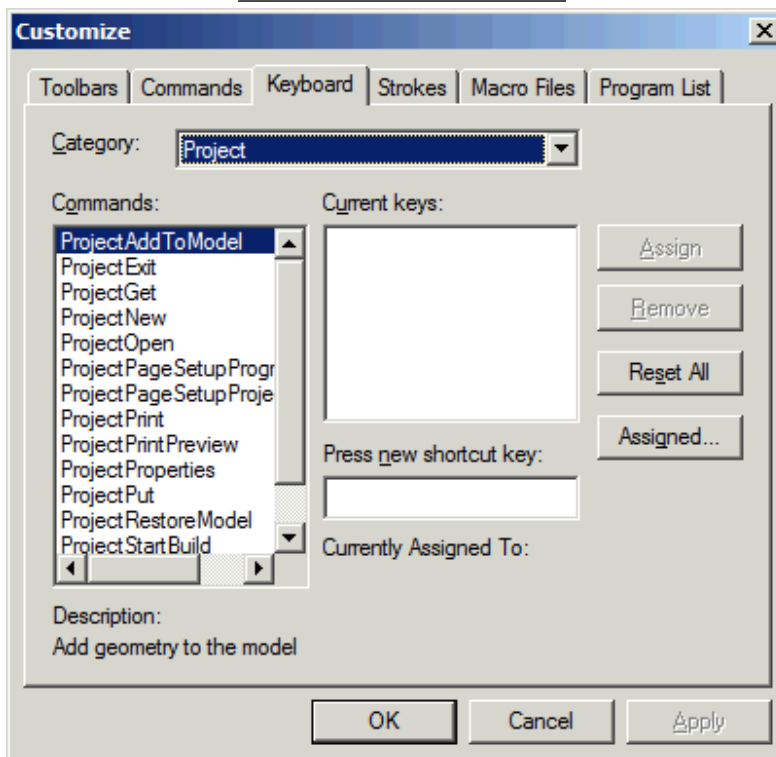
Customizing Short Cut Keys

The information in this tip applies to:

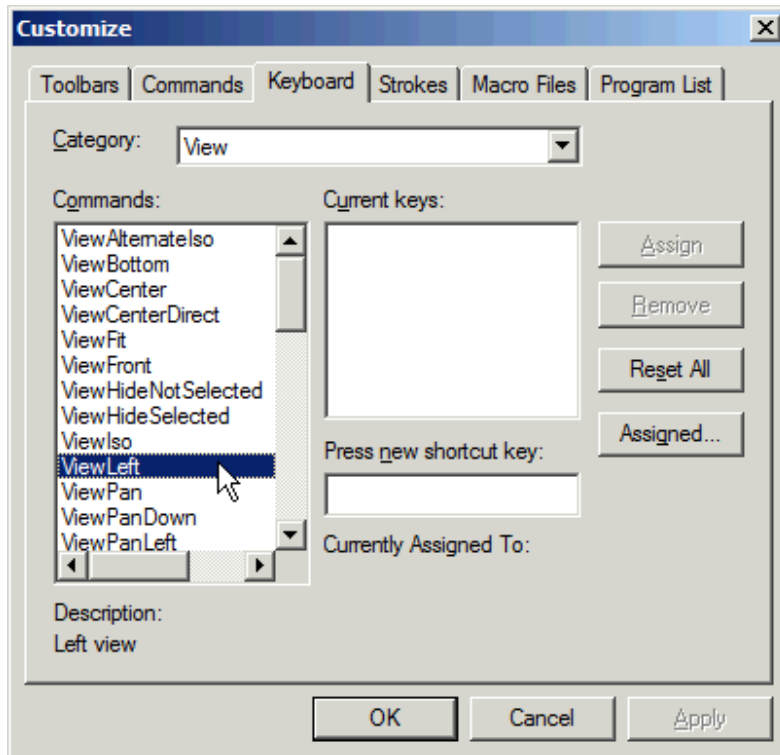
- Prospector 5.0 and above



Choose
Tools/Customize

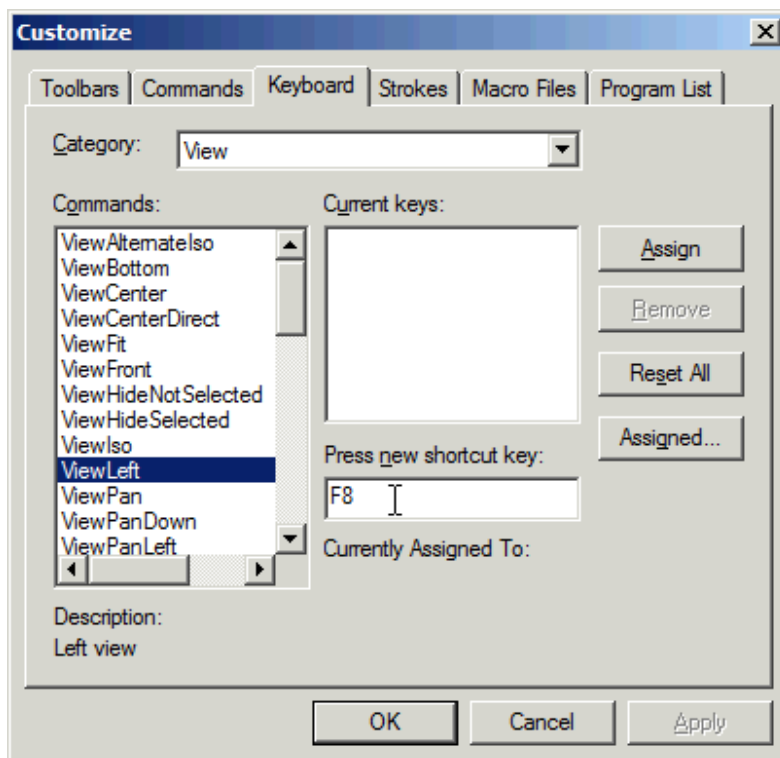


Choose the Keyboard
tab from the Customize
dialog.



Choose the command you wish to assign to a shortcut key.

Browse all possibilities by choosing different Categories and clicking on the Commands for that category to get a description of the command that is printed in the dialog underneath Description.



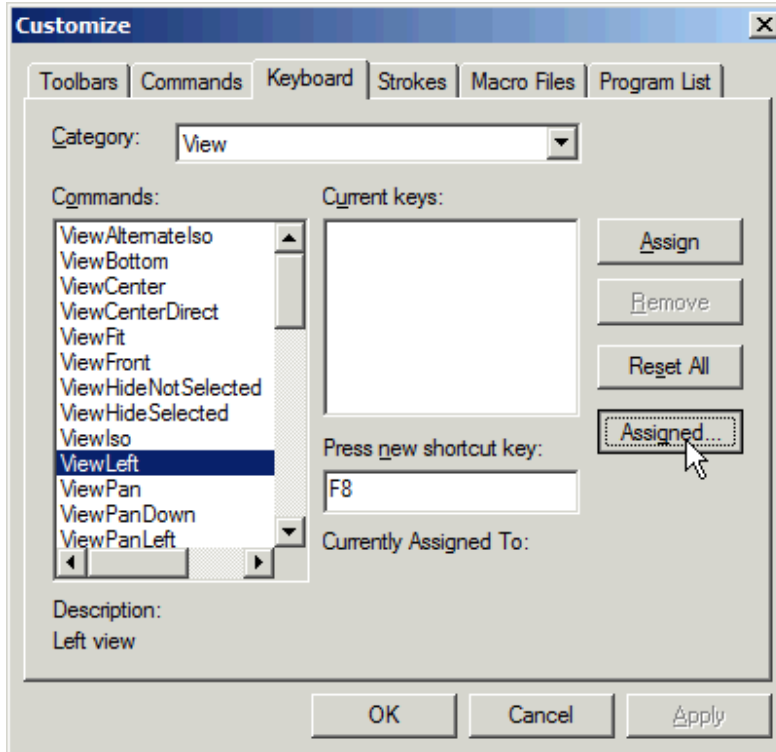
Once you have identified the command, enter the key you wish to assign this command to.

In this case, we'll assign it to F8.

If the F8 was already assigned a function, it will be reported in the dialog under Currently Assigned To:

Click the Assign button to assign F8 to the command ViewLeft.

How to Find Out What Keys Are Assigned:



Click the Assigned button to...

The 'Assigned Keys' dialog box is shown with a table of bound commands. The table has three columns: 'Keys', 'Command', and 'Description'. The 'Bound Commands' dropdown is set to 'Bound Commands'. The table lists various keyboard shortcuts and their corresponding commands and descriptions.

Keys	Command	Description
Ctrl+Z	EditUndo	Undo the last action
Ctrl+Y	EditRedo	Redo the previously undone action
Ctrl+X	EditCut	Cut the selection and put it on the Clipboard
Ctrl+C	EditCopy	Copy the selection and put it on the Clipboard
Ctrl+V	EditPaste	Insert Clipboard contents
DELETE	EditDelete	Delete the selection
ESCAPE	EditDoneWithOperation	Done with operation
SPACE	EditNextCandidate	Choose the next candidate
Alt+RETURN	EditProperties	View the selected object's properties
l	ViewRedraw	Clear and redraw the screen
z	ViewZoomIn	Zoom in
Z	ViewZoomOut	Zoom out
c	ViewCenterDirect	Center the view at the cursor position
r	ViewToggleTrackBall	Show or hide trackball
RIGHT	ViewPanLeft	Shift the view to the right by 1/2 the screen
LEFT	ViewPanRight	Shift the view to the left by 1/2 the screen

post a dialog showing which strokes are currently assigned and what they do.