

PROSPECTOR™

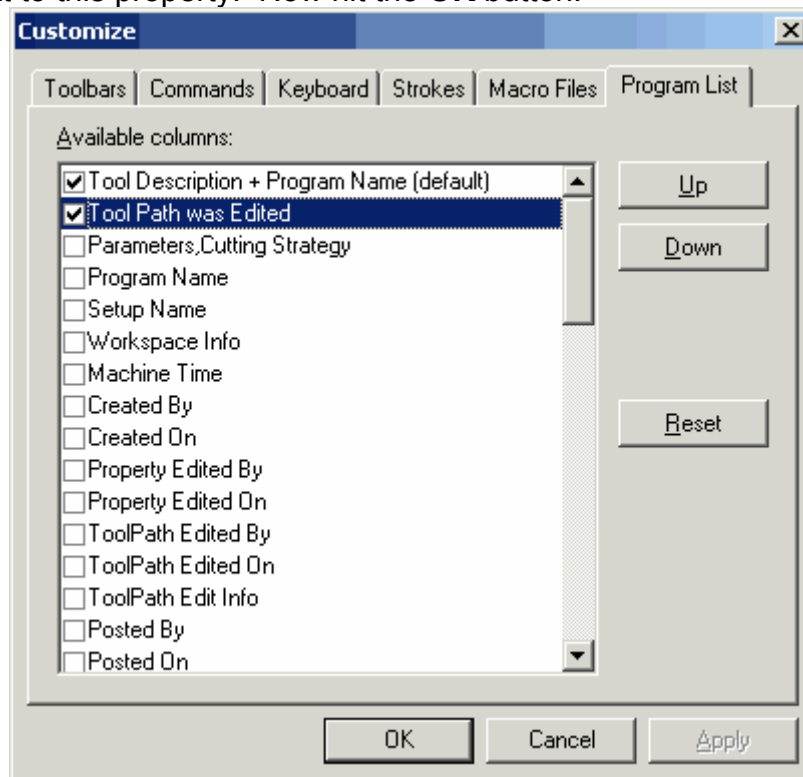
The Gold Standard In Toolmaking

Which Programs Have Been Edited?

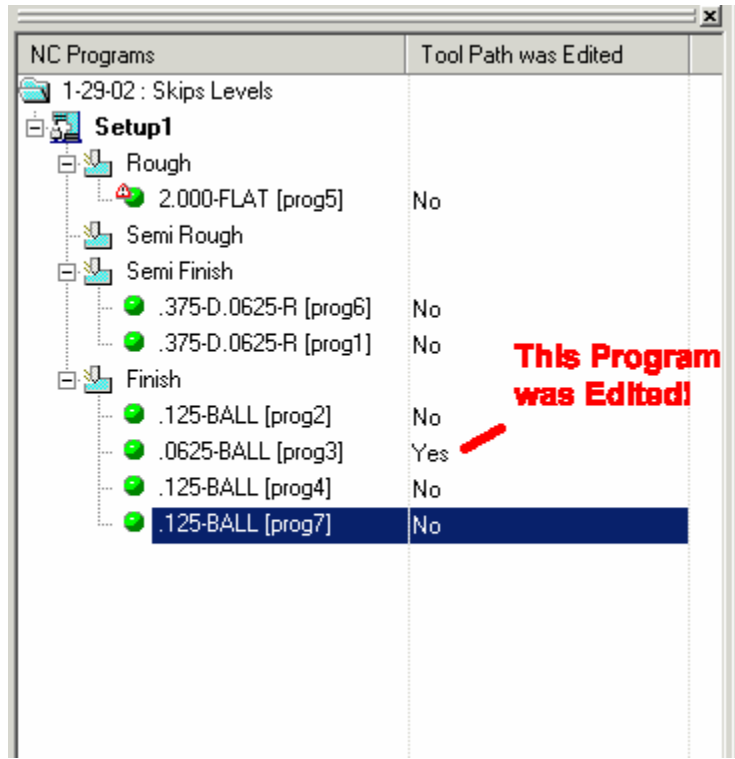
After updating the project with an engineering change, you may want to look thought the programs you have trimmed or transformed. Because these programs have been edited, they will not regenerate automatically because of the engineering change so you will want to take a close look to see if they are still appropriate.

The program list can display a lot of information about each program, one of these being whether or not the program has been edited.

The **Tools/Customize...** menu item brings up the customization property sheet. The last tab, Program List, allows you to pick which properties to display for each program. In the list of available columns you find **Tool Path was Edited**, check the box next to this property. Now hit the **OK** button.



Including this property as part of the **Program List** lets you easily see which programs have been edited:



NC Programs	Tool Path was Edited
1-29-02 : Skips Levels	
Setup1	
Rough	
2.000-FLAT [prog5]	No
Semi Rough	
Semi Finish	
.375-D.0625-R [prog6]	No
.375-D.0625-R [prog1]	No
Finish	
.125-BALL [prog2]	No
.0625-BALL [prog3]	Yes
.125-BALL [prog4]	No
.125-BALL [prog7]	No

This Program was Edited!