

PROSPECTOR™

THE GOLD STANDARD IN TOOLMAKING

How to Disable the 'Default Rules Check on Exit' in PowerSource

The information in this tip applies to:

- Prospector 6.1 and above

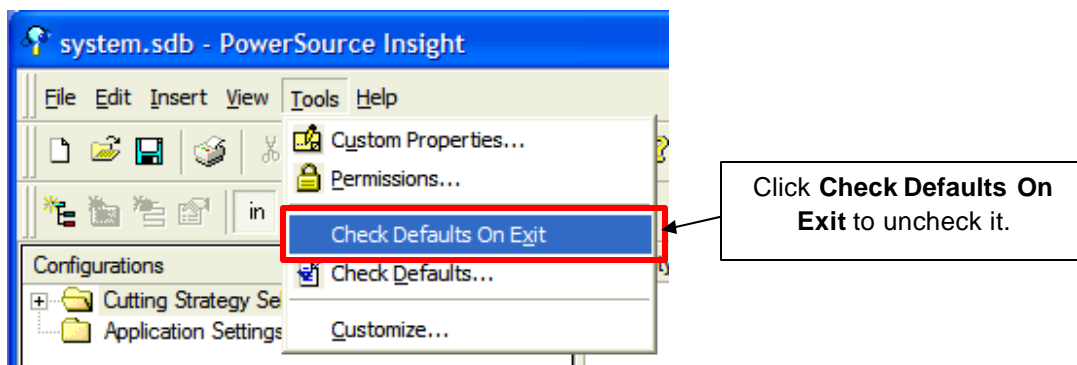
SUMMARY

When you exit PowerSource Insight after making changes in the system database, Insight automatically checks to make sure all rules have a default value. This is done to maintain proper integrity of the database when Prospector reads it. This check is usually necessary when you are creating a new system database from scratch, so that you don't miss assigning values for properties. However, in most practical cases (like for instance, if you are making a few simple changes to the system database that was shipped with Prospector), this check might not be needed and therefore might save you time if you could disable it.

MORE INFORMATION

To disable the default rules check follow these steps:

1. Start PowerSource Insight and load the system database.
2. Click **Tools > Check Defaults on Exit** (make sure it becomes unchecked).



3. Exit Insight.

If necessary in the future, you can always manually force PowerSource Insight to check the default rules by clicking **Tools > Check Defaults**.