

# CADRA

## View/Check Utility

*View and Markup Utility for Cadra Drawings*

Cadra View/Check is a view and/or markup utility for use with Cadra software. It provides people inside or outside of your company with "view only" and/or "red-lining" access to Cadra engineering drawings without compromising the integrity of underlying data.

### Why Choose Cadra View/Check Utility?

#### **Involve more people in the product development process**

Bring more people into the front end of the new product development process, improving teamwork both with internal staff and with external collaborators and consultants.

#### **Enhance PDM Systems**

Cadra View/Check has been enhanced to make implementation with industry standard PDM systems both easier and faster.

#### **Facilitate data sharing**

Enables authorized individuals to share, review, and mark up Cadra engineering drawings on a transparent overlay without altering underlying data.

#### **Reduce design costs**

Reduce the cost and frustration of redesign resulting from poor communications, since all reviewers view and mark up (but not alter) the most current design information.

#### **Encourage immediate feedback on Work-in-Process**

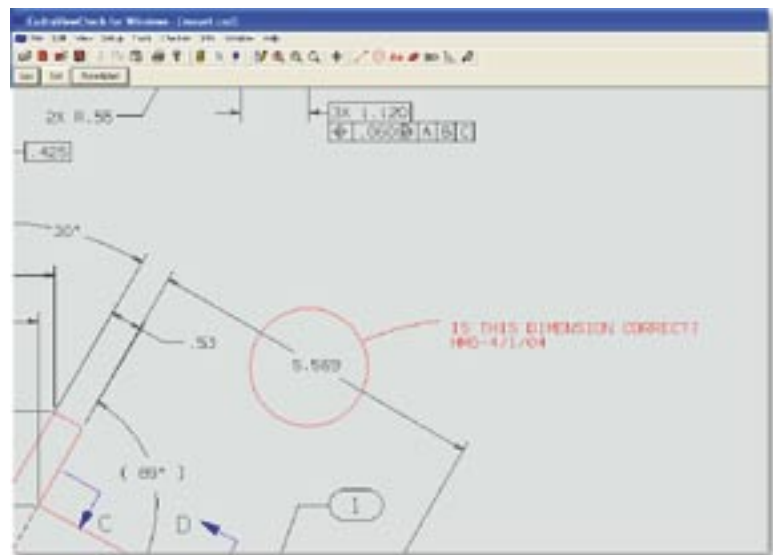
Quickly and easily collect questions, comments, or corrections to work in progress, preventing potentially misdirected design efforts.

#### **Allow low-cost access to Cadra engineering drawings**

Authorized users get low-cost access to Cadra engineering drawings regardless of location, department, or hardware platform.

#### **Increase your productivity by using software tuned for mechanical design**

Cadra is a mechanical design program tuned to the specific needs and requirements of manufacturing companies, and is designed to deliver productivity right out of the box. Timesaving features include associative detail views (which enable you to zoom in on a specific section of a design to annotate and dimension it), "one touch" productivity tools (quick dimensioning, trimming, etc.) and variational/parametric techniques (for fast and easy editing and family of parts creation).



#### **Use software that's preferred by the world's leading manufacturing companies**

Cadra is proven mechanical design software, which has been continually refined over the past fifteen years. It is used daily by leading companies around the globe including Braun, General Dynamics, Electric Boat, Polaroid, Volkswagen, and Yamaha.

### Global Solution

Cadra is available in multiple languages (English, French, Italian, German, Japanese) and is supported worldwide. Available services include on- and off-site training, database conversions, and software options such as programming tools, viewers, and translators to/from other CAD programs.

### Low Cost of Ownership

The many benefits of Cadra - more efficient drawing production, more time for design iterations, improved product quality, faster time to market, and interoperability with your existing CAD and business tools - translate into a low overall cost of ownership.

*(Continued on back)*

# INTELLIGENT DESIGN & DRAFTING

## What You Get With the View and Markup Utility

- User-definable red-lining and/or view-only privileges
- Built-in query capability interrogates Cadra drawings to determine geometric properties including section properties, dimensions, and distances between points
- Transparent data overlay technology enables reviewers to add comments, corrections, and questions while it maintains the integrity of underlying data
- Comparison capability allows comparing current drawings with previous versions
- Fully integrated with Cadra Design Drafting, so users can customize their graphic environment, manage files, and access other software options
- With Cadra data translators, you can use Cadra View/Check to view and/or red-line drawings created with other CAD/CAM systems

## Products

CAD/CAM products available from Softech include:

### Base Products

**Cadra Design Drafting** - a 2-1/2D design and drafting program designed to speed the production of mechanical drawings

**Cadra NC** - a 2 through 5 axis NC programming package

**DesignGateway** - allows product data and all related project documents to be accessed, viewed, and edited

### Cadra Options

**CadraWorks** - an integration product that tightly couples Cadra and SolidWorks

**CadraDirect** - reads and writes directly to industry leading software including CADAM, CADDs, DWG, DXF, IGES, and reads CATIA and MICROCADAM

**CadraRaster** - a raster-to-vector conversion utility for converting paper drawings into Cadra files

**Cadra Autogeometry** - an easy to use macro programming language

**CadraLIB/BOM** - assists Cadra users in conforming to QS/ISO standards by locating parts and storing their location automatically

**CadraEDM** - manages the workflow and documents of an Engineering department, which may include Cadra files

## Requirements and Licensing

CadraViewCheck is an add-on option which runs under a license management system. Under the license manager, applications can run on single systems or local and wide area networks. License management lets you configure your system for maximum resource usage while minimizing software costs. Alternately, Cadra may also be licensed utilizing the Globetrotter Licence Manager FLEXIm.

## Platforms

Cadra Design Drafting operates on PC's running NT, 2000 and XP Professional, as well as UNIX workstations running HP-UX or SUN Solaris.

## For More Information

To contact your local SofTech representative, call us at 1-800-800-3702 (Int'l +1 978 640 6222), e-mail us at [softech-sales@softech.com](mailto:softech-sales@softech.com) or visit us on the Web at [www.softech.com](http://www.softech.com).



**SofTech** INC.

#### CORPORATE HEADQUARTERS:

Two Highwood Drive  
Tewksbury, MA 01876  
USA

Telephone: (978) 640-6222  
E-mail: [info@softech.com](mailto:info@softech.com)  
Web: [www.softech.com](http://www.softech.com)

For More Information:

E-mail [info@softech.com](mailto:info@softech.com)  
or visit [www.softech.com](http://www.softech.com)