

# CADRA

## CadraEDM

*Integrated Electronic Document Management System*

### Why Choose CadraEDM?

A CIM Data study showed that up to 30% of engineering time is wasted searching for and collecting information.

CadraEDM is a workflow-orientated process that automates tasks for document management. Engineering data is organized by groups and projects, and allows for easy data sharing between the different departments, while also protecting internal data. Rapid implementation is possible because of CadraEDM's easy-to-use interface and graphical configuration.

### CadraEDM helps save time by:

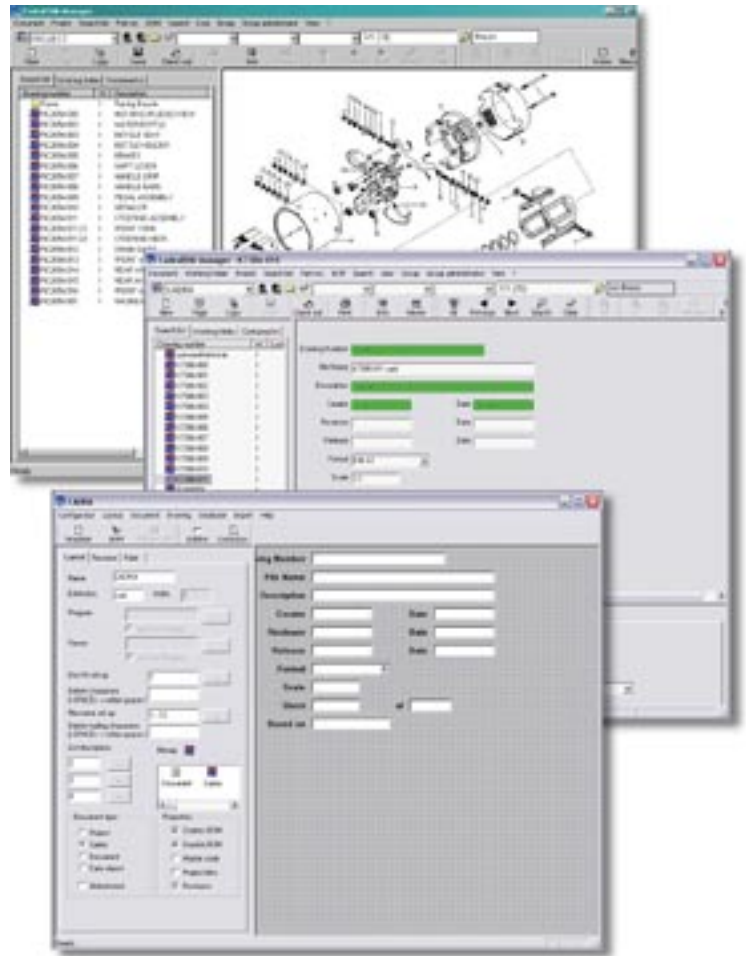
- Controlling the process and progress of the work
- Easily managing the data flow between different departments
- Working in teams on projects allowing you to bundle your manpower
- Securing data on a central server so you never lose data again
- Implementing in a short time period

### What you get with CadraEDM?

- Management of engineering and non-engineering data
- Central storage of the documents (one or more central data pools)
- Document protection using Group and user permissions
- Various document states (e.g. obsolete, draft, release, etc.)
- Document history (e.g. creator, change reason, etc.)

### Features

- Tight Cadra™ Design Drafting integration
- Flexible and highly customizable system



- Integrated management for
  - Bill of material
  - Revisions
  - Plot management functionalities
  - Graphical preview of Cadra documents

*(Continued on back)*

# INTELLIGENT DESIGN & DRAFTING

## Document interfaces

- Cadra versions 9.28, 10, 11 and 12
- Microsoft™ Office™ including Word™, Excel™ and PowerPoint
- DesignGateway

## MRP/ERP Interface

With CadraEDM's Custom process interface you can integrate CadraEDM with MRP systems such as SAP R/3 or Dakoda.

## Products

CAD/CAM products available from SofTech include:

### Base Products

**Cadra Design Drafting** - a 2-1/2D design and drafting program designed to speed the production of mechanical drawings

**Cadra NC** - a 2 through 5 axis NC programming package

**Cadra View/Check** - a viewing and/or red-lining utility which provides broad access to Cadra drawings and models across the organization

**DesignGateway** - allows product data and all related project documents to be accessed, viewed, and edited

### Cadra Options

**CadraWorks** - an integration product that tightly couples Cadra and SolidWorks

**CadraDirect** - reads and writes directly to industry leading software including CADAM, CADDs, DWG, DXF, IGES, and reads CATIA and MICROCADAM

**CadraRaster** - a raster-to-vector conversion utility for converting paper drawings into Cadra files

**Cadra Autogeometry** - an easy to use macro programming language

**CadraLIB/BOM** - assists Cadra users in conforming to QS/ISO standards by locating parts and storing their location automatically

## Requirements and Licensing

CadraEDM is a standalone application, which runs under a license management system. Under the license manager, applications can run on single systems or local and wide area networks. License management lets you configure your system for maximum resource usage while minimizing software costs. Alternately, CadraEDM may also be licensed utilizing the Globetrotter License Manager FLEXlm.

## Platforms

Cadra Design Drafting operates on PC's running NT, 2000 and XP Professional, as well as UNIX workstations running HP-UX or SUN Solaris.

## For More Information

To contact your local SofTech representative, call us at 1-800-800-3702 (Int'l +1 978 640 6222), e-mail us at [softech-sales@softech.com](mailto:softech-sales@softech.com) or visit us on the Web at [www.softech.com](http://www.softech.com).



**SofTech** INC.

#### CORPORATE HEADQUARTERS:

Two Highwood Drive  
Tewksbury, MA 01876  
USA

Telephone: (978) 640-6222  
E-mail: [info@softech.com](mailto:info@softech.com)  
Web: [www.softech.com](http://www.softech.com)

For More Information:

E-mail [info@softech.com](mailto:info@softech.com)  
or visit [www.softech.com](http://www.softech.com)