

# CADRA®

## Batch Plot and File Conversion

*Complete Suite of Programs for Creating Plots and Translations*

Batch Plot and Translator is a suite of programs for creating plots and translations from requests generated by a variety of programs.

### Why Choose Batch Plot?

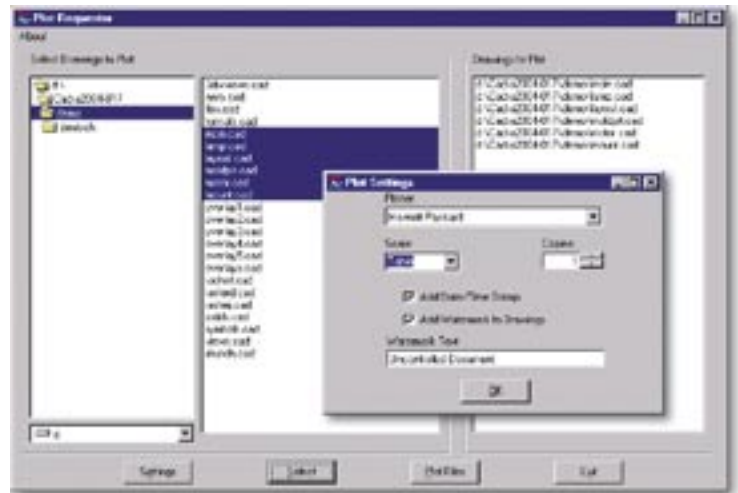
- Plots drawings from job orders with your MRP system
- Translates drawings as they are readied for change from your PDM system
- Request plots from terminals or computers located on the shop floor
- Allows Cadra users to create a large number of plots without tying up their workstation or time
- Automates the creation of raster or HPGL files for use as thumbnails in viewers or PDM systems

### What You Get with Batch Plot

- Stores plotter specifications in simple text files
- Passes requests for translation and plot to the server via ASCII text files
- Specifies number of copies and plot scale (including scale to fit plotter) for request files
- Adds notes or updates using information from the job order and passed them on via the request file
- Logs plots and translations allowing tracking of usage by user or order

### User Interface Features

- Explorer like navigation of drives and directories containing drawings
- User can select drawings individually or in groups
- Once the user has selected the Drawings, selecting "Plot Files" will display the settings Dialog box on the first program run. This allows the user to select plotter and scaling functions



- On subsequent runs the user can select "Settings" to change the stored values or simply select the drawings and press "Plot Files"

### System Features

- Plotter - Allows selecting from a list of the supported plotter/printers. Features include:
  - Scale - Not only can the user specify standard scale values but there are three special function settings
  - Table uses a table defined for the specific plotter. For example on a C size plotter A and B size drawings may plot at 100%, C size Drawings at 98%, D Size at 66%, and E Size at 49%
  - Fit scales the drawings based on the maximum height and width stored for the current plotter
- Default Uses the value stored in the Cadra Plot Data
- Copies allows for multiple copies of each plotter
- Date/Time stamp places the current Date, Time, and User

*(Continued on back)*

# INTELLIGENT DESIGN & DRAFTING

name in a note in the corner of the drawing

- Watermark adds a note onto the drawing before plotting
- Watermark Text allows the user to determine the note text unless set to Read Only during configuration

## Installation and Setup

- The server installation requires the creation of a text file that defines each plotter. The Cadra plotter selection and options, the maximum x and y dimensions, and plot command are required information for setup.
- Client software can be located on the network or installed at individual workstations
- The server machine needs read access to the drawings to be plotted or converted
- The client software that generates batch requests needs write access to the directory on the batch server. Clients will need the path and filename information for the drawings requested
- CadraBatch comes with an Autogeometry program for requesting plots that run in UNIX or Windows environments as well as a Visual Basic plot request program for the Windows environment

## Products

CAD/CAM products available from SofTech include:

### Base Products

**Cadra Design Drafting** - a 2-1/2D design and drafting program designed to speed the production of mechanical drawings

**Cadra NC** - a 2 through 5 axis NC programming package

**Cadra View/Check** - a viewing and/or red-lining utility which provides broad access to Cadra drawings and models across the organization

**DesignGateway** - allows product data and all related project documents to be accessed, viewed, and edited

### Cadra Options

**CadraWorks** - an integration product that tightly couples Cadra and SolidWorks

**CadraDirect** - reads and writes directly to industry leading software including CADAM, CADDs, DWG, DXF, IGES, and reads CATIA and MICROCADAM

**CadraRaster** - a raster-to-vector conversion utility for converting paper drawings into Cadra files

**Cadra Autogeometry** - an easy to use macro programming language

**CadraLIB/BOM** - assists Cadra users in conforming to QS/ISO standards by locating parts and storing their location automatically

**CadraEDM** - manages the workflow and documents of an Engineering department, which may include Cadra files

## Requirements and Licensing

The server portion of CadraBatch requires a fixed license for Cadra, Autogeometry, and the CadraDirect interfaces you plan to serve. The server machine needs read access to the drawings to be plotted or converted. The client software that generates batch requests needs write access to the directory on the batch server. Clients will need the path and filename information for the drawings requested. CadraBatch comes with an Autogeometry program for requesting plots that run on Windows or UNIX environments as well as a Visual Basic plot request program for the Windows or UNIX environment.

## Platforms

Cadra Design Drafting operates on PC's running NT, 2000 and XP Professional, as well as UNIX workstations running HP-UX or SUN Solaris.

## For More Information

To contact your local SofTech representative, call us at 1-800-800-3702 (Int'l +1 978 640 6222), e-mail us at [softtech-sales@softtech.com](mailto:softtech-sales@softtech.com) or visit us on the Web at [www.softtech.com](http://www.softtech.com).



**SofTech** INC.

#### CORPORATE HEADQUARTERS:

Two Highwood Drive  
Tewksbury, MA 01876  
USA

Telephone: (978) 640-6222  
E-mail: [info@softtech.com](mailto:info@softtech.com)  
Web: [www.softtech.com](http://www.softtech.com)

For More Information:

E-mail [info@softtech.com](mailto:info@softtech.com)  
or visit [www.softtech.com](http://www.softtech.com)