

Cadra View Express User's Guide

Cadra 2002Plus includes a new Cadra file viewer called Cadra View Express. This is a free tool to enable users to view and print Cadra drawings on Microsoft Windows platforms. It is usable as a standalone program or as a Microsoft Windows Explorer plugin. It is downloadable from <http://www.softech.com/cadviewexpress>.

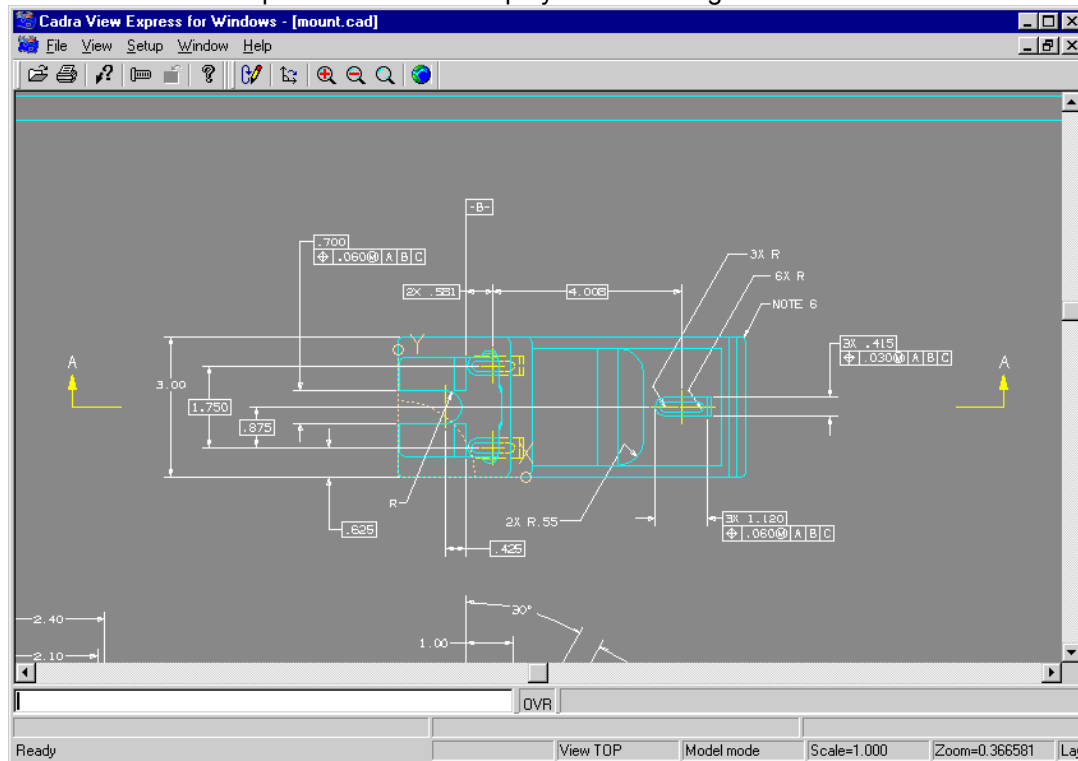
Cadra View Express supports the following features:

1. The ability to read and display Cadra files.
2. The ability to zoom and pan the Cadra file.
3. The ability to plot the file.
4. The ability to choose a view.
5. The ability to set background and foreground colors.
6. The ability to toggle the visibility of layers.
7. The ability to load external figures.
8. The ability to view internal and external figures.
9. The ability to autoload text fonts.
10. The ability to display a grid.

Cadra View Express does NOT support the following:

1. The reading of any file format other than native Cadra files.
2. The modification of the file.
3. The writing (saving) of any files.
4. Autogeometry.
5. The COM interface.
6. Host interaction.
7. Background translation.

When Cadra View Express is started it displays the following window:



The current display configuration (window size and View settings) are saved for subsequent sessions upon exit.

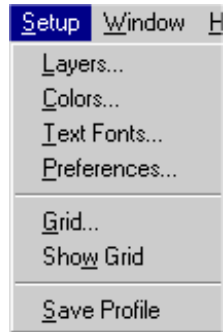
The **File Menu** enables opening of Cadra file formats (.cad and .czp), looking at figures in a file, plotting the file and accessing accumulated recent file and directory lists.



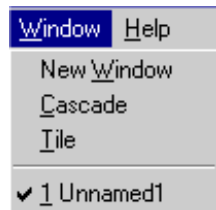
The **View Menu** allows you to modify the visible portions of the application, perform zooming operations, redraw the drawing and cycle through the views in the drawing.



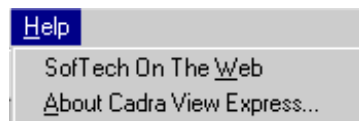
The **Setup Menu** allows for setting layer attributes, colors, text fonts and general application preferences, setting up and displaying a grid and saving application preferences to a file for use in subsequent sessions.



The **Window Menu** allows you to configure windows within the viewer.



The **Help Menu** allows you to see the version of Cadra View Express you are running and to access the Softech, Inc. web site.



The tool bars allow faster access to functions.



1 2 3 4 5 6 7 8 9 10 11 12

In order, the functions on the toolbar are:

1. Open file
2. Print file
3. Get drawing count information
4. View the figure list.
5. Revert to the drawing from viewing a figure.
6. The Help/About dialog.
7. Redraw
8. Next view
9. Zoom in
10. Zoom out
11. Zoom All
12. Go to the Softech, Inc. web site.