

Cadra Version 2002 Release Notes

SofTech is pleased to provide you with Cadra - Version 2002. Version 2002 includes a number of major enhancements in addition to some high priority corrections. This document will briefly review the new features and changes to Cadra. A summary of the installation process is also included toward the end of the document. The enhancements include:

1. Support for AutoCAD versions 2000, 2000i and 2002
2. Support for Catia-Cadam Drafting 4.2.4
3. Locked layers
4. Hiding Points in Figures
5. OLE Drag and Drop of files into Cadra
6. A Separate CadraViewCheck image
7. Globetrotter licensing
8. New Sentinel hardware lock drivers

New Cadra Database Version

To enable some of the new features of Cadra 2002 it was necessary to change the Cadra database. For this reason files written out from Cadra 2002 by default will not be readable into older versions of Cadra (including version 12). Using the File/Save As/Options dialog you can choose an older database version to write so older Cadra versions can read the output. A new option - **11.x/12.x** – has been added.

Support for AutoCAD Versions 2000, 2000i and 2002

AutoCAD Versions 2000, 2000i and 2002 DXF and DWG file formats are now supported by the Cadra DXF and DWG read and write translators. This adds enhanced dimension edit ability in AutoCAD, a new option to read only model space geometry into Cadra and improved output of 2-byte Kanji characters.

It should be noted that Cadra curve dimensions are converted into AutoCAD angular dimensions as AutoCAD does not support a curve dimension type. Also Cadra coordinate dimensions are converted to AutoCAD linear dimensions. Cadra chamfer dimensions are output as blocks of lines and text as AutoCAD does not support a chamfer dimension type. Cadra dimensions with geometric tolerances are also currently output as blocks of lines and text.

Some dimension types output from Cadra in AutoCAD DXF format do not look the same when read into AutoCAD 2000 although they do look the same when read into AutoCAD 14, 2000i and 2002. These include:

- coordinate dimensions
- curve dimensions
- full circle radial and diameter dimensions with leaders inside the circle

We are working to correct some of these dimension behaviors in future releases of Cadra.

Also note that Cadra does not support AutoCAD 3D geometry and although all entities in AutoCAD viewports are read in, Cadra does not clip the geometry to the viewport limits.

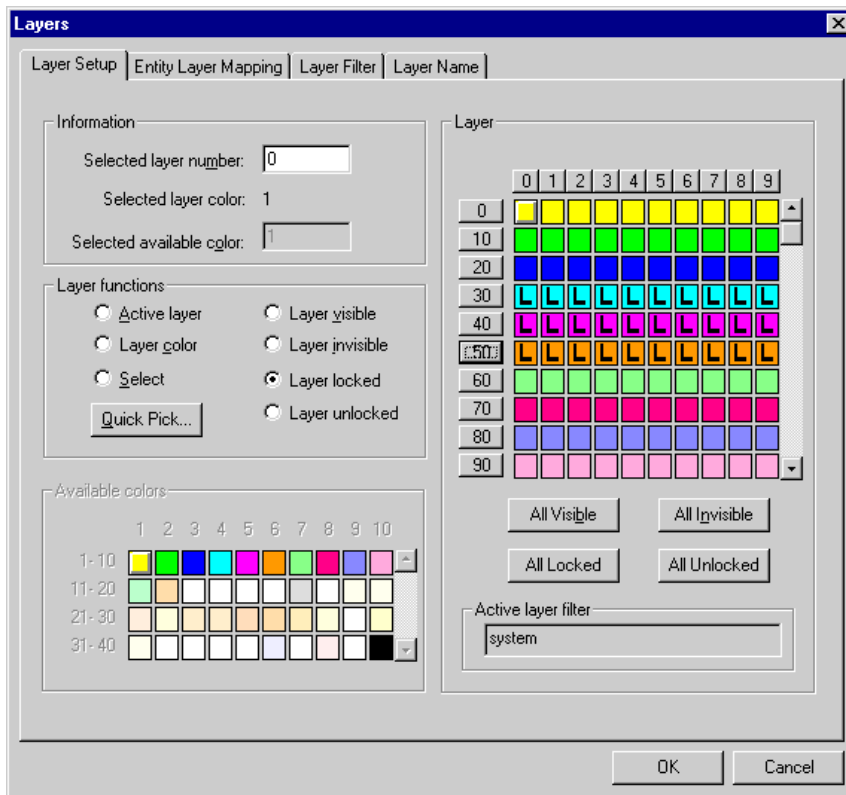
Support for Catia-Cadam Drafting (CCD)

This release of Cadra introduces the new Catia-Cadam Drafting (CCD) read and write translator.

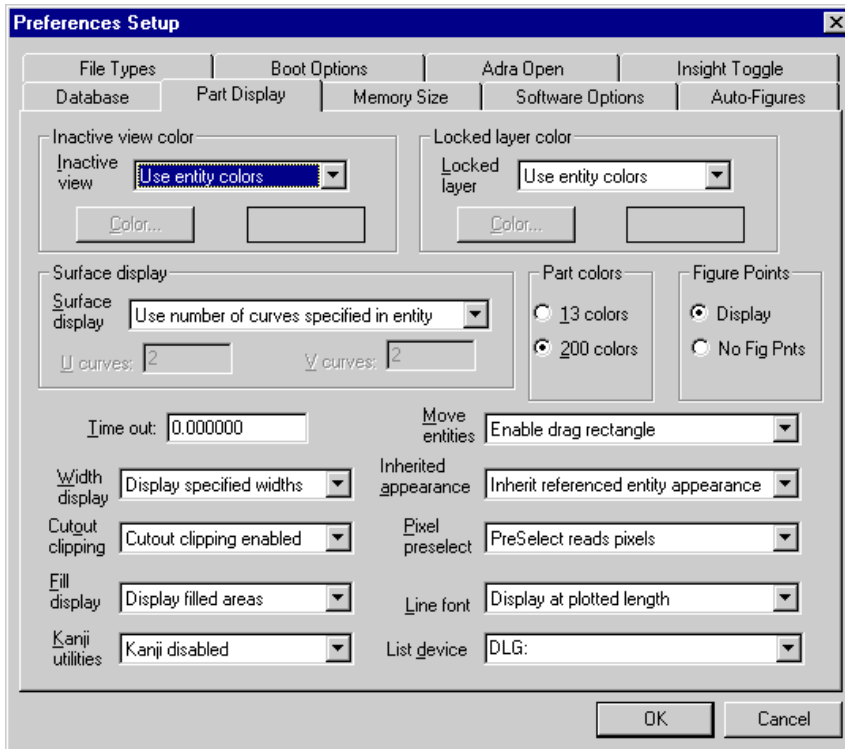
The Cadra CCD translator is able to read CCD files in both 4.2.2 and 4.2.4.1 formats. It writes out CCD Version 4.2.2 files that can be read into either version of CCD. All Cadra compatible CCD entities are converted. Non-Cadra-compatible CCD entities are exploded into primitive entities.

Locked Layers

The ability to lock layers has been added to Cadra. Entities on locked layers are not modifiable although they can be selected. A Locked Layer color can be set to render all entities on locked layers. By default entities on locked layers use their natural layer or entity color. Layers are locked (and unlocked) using the **Layer Setup** page of the **Setup/Layers** dialog.



Locked layer color is enabled and changed in the Part Display tab of the Setup/Preferences dialog:



Hiding Points in Figures

Sometimes points are added to figures for construction purposes only. It is then desirable to have these points visible when viewing and editing the figure but have them hidden when viewing the drawing containing the figure. A new option in Cadra allows the user to specify that points in figures are to be hidden when viewing a drawing containing the figures. The new **Figure Points** option is on the **Part Display** page of the **Setup/Preferences** dialog.

OLE Drag and Drop of files into Cadra

It is now possible to drag files into the Cadra window and have them opened in Cadra automatically. This includes all file formats supported by Cadra.

A Separate CadraViewCheck Image

A separate program image, called **viewchk**, is now included in the Cadra kit. It is the CadraViewCheck program and is the same as invoking Cadra with the CadraViewCheck option.

Globetrotter Software Licensing

Support has been added for Globetrotter licensing. What this means is you have a choice about which licensing mechanism you use when you purchase Cadra – either Cadra’s own licensing or Globetrotter licensing. They both support dedicated and floating licenses.

The significant differences between Cadra licensing and Globetrotter (FLEXIm) licensing include:

- With Cadra licensing, multiple licenses are installed on a single machine by combining them into a single NLS.TXT file. With FLEXIm, multiple licenses may be combined into a single file but they may also be placed in multiple files in a single directory (or even in multiple directories); all the files must have the .LIC file name extension.
- With Cadra licensing, redundant license service is provided by issuing separate license files (with the proper keywords) to the primary and secondary servers. As long as either server is available, all licenses are available. With FLEXIm, a single license file is issued which identifies a set of three servers. As long as two of the three servers are available, all licenses are available.
- With Cadra licensing, each client (end-user) computer is configured to get licenses from a single license server (and possibly from its redundant backup). With FLEXIm, each client computer can be configured to try to get licenses from several independent license servers (and/or from several independent sets of redundant servers).
- With Cadra licensing we provide a GUI tool for installing licenses that allows the customer to check the appropriate combination of boxes and then key in a short license key code. With FLEXIm there is no such tool. The codes that need to be entered are quite long (two 60-digit hex numbers), so electronic delivery of the license files is the only desirable method.

If you choose Globetrotter licensing then you need to do the following:

- For dedicated licenses perform steps 3-7.
 - For clients of floating licenses just do step 8.
 - For floating license servers perform all steps except 8.
1. Determine if you will be using dedicated licenses or floating licenses. If you will use floating licenses you will additionally need to decide if you will be using a single license server or three redundant license servers.
 2. If you are using floating licenses install the Softech FLEXIm License Server on the selected server system(s). The Softech FLEXIm License Server is provided on a separate CD.
 3. Send the name and hostid (output from **Imhostid**) of each system requiring a license to Softech. These are the systems where the dedicated licenses are to be used or the systems to be used to serve floating licenses.
 4. Softech will issue license files (*.LIC) to you via E-Mail.
 5. Save the .LIC file(s) you receive to a directory on the licensed systems. If you are using floating licenses this should be the directory that was specified when the license server software was installed as a service.
 6. Edit the CADRA.INI file and set the ADRA_NLS symbol to point to the full file specification of your NLS.TXT file.
 7. Create the NLS.TXT file. If you are using dedicated licenses this is the last step. Place the following line in the NLS.TXT file:
 .globetrotter <path>
 where <path> is the absolute path to the directory where the *.LIC file(s) are. Do not include a file name in this path.
 8. If you are using floating licenses you need to create a *.LIC file on each client system that points to the server system(s) for a license. This file should contain the following two lines:
 SERVER <server-name> <server-hostid>
 USE_SERVER

- Where <server-name> is the network name of the license server and <server-hostid> is the server hostid. If using three redundant license servers this file should contain three SERVER lines specifying the three license servers.
9. If you are using floating licenses, start the FLEXIm License Manager service on the server systems. This can be done in one of three ways:
 - i. Rebooting the server system will automatically start the service.
 - ii. Use the Control Panel Services applet.
 - iii. Use the FLEXIm Utilities program (**Imtools**). In **Service/License File** tab select the FLEXIm License Manager in the list box, then in the **Start/Stop/Reread** tab click Start Server.
 10. If you are using floating licenses, you can read the FLEXIm End User's Guide for more information on FLEXIm Utilities and options. If you are interested in additional FLEXIm monitoring utilities you will need to contact Globetrotter directly (www.globes.com).

If you have any questions or concerns regarding updates to Cadra licensing, please contact your local SofTech representative or Cadra/SofTech Customer Service at 1-800-321-2372.

New Sentinel Hardware Lock drivers

New Rainbow Sentinel System Drivers (Version 5.39.2) are now distributed with Cadra.

Installing Cadra Version 2002

Recommended System Requirements

Windows Systems:

- Microsoft Windows XP Pro, 2000 (SP2), NT 4.0 (SP3 or higher) or Windows 98
- Intel Pentium-based computer
- 64 MB RAM
- 65 MB free disk space
- Screen resolution setting of 1024 x 768

Before You Begin Installation

- Have your Product Authorization License (PAL) available during the installation procedure.
- On Windows platforms, close all other programs before proceeding.
- Cadra requires either Internet Explorer 3.02 or greater, or Netscape Navigator 3.0 or greater to read the help files.
- For detailed information on installation options including license installation, print a copy of the **Installation Guide** in HTML format on the top level of the CD.

Installation Media

Multiple platform and languages versions of Cadra are available on the CD-ROM.

Cadra Installation

Windows Systems:

These instructions assume an English installation on Intel, with d:\ as the CD drive.

1. Log on to an Administrator account or one with Administrator privileges.
2. Insert the Cadra CD into the CD-ROM.
3. If autorun is active, the installation procedure should start automatically.
4. If you do not have autorun capabilities:
 - a. Click the **START** button and select **RUN**.
 - b. Type d:\setup.exe in the **OPEN** box.
 - c. Click **OK**.
5. Follow the Install Shield wizard to complete the installation.
6. After you have installed Cadra, reboot your system.

Troubleshooting a Hardware Lock Problem:

If your hardware lock is creating a host ID of host-ID 0000000, try the following steps. If this solution doesn't work, contact Cadra/SofTech Customer Service at 1-800-321-2372.

1. Open Windows Explorer and go to the **CADRA\DRIVERS\WIN_NT** directory (or Win9x if you are running Windows 98 instead of XP Pro or NT).
2. Double click **SETUPX86.exe** (or **sentw9x.exe**).
3. Select **FUNCTIONS / INSTALL SENTINEL DRIVERS** (the path should be the directory listed above).
4. Click **OK**.
5. Before you reboot make sure that your registry entry (**AFH000**) is set for **2**. If it is not, continue with the following steps:
 - a. Select **START / RUN / REGEDIT / OK**
 - b. Select **EDIT / FIND**
 - c. Key in AFH000
 - d. Double click the **a/b** icon to change default value to a **2**

You may need to reboot your system.

Corrective Maintenance

The following corrections are included in this release:

1. Naming figures to no name. Figures can now be renamed to no name using either the Windows GUI or the Cadra GUI. This is an important enhancement because of figure name conflicts. You can now resolve this problem by removing unwanted figure names. This leaves the figure in the database as an unnamed figure.
2. Fonted lines are now rendered using the associated font no matter how short they are. Previous versions of Cadra had rendered very short fonted lines as solid.
3. (SPR 53686) Cadra application COM Automation objects created by client programs (e.g. using CreateObject from a Visual Basic program) now exit when released by the client program. In previous versions of Cadra the automation object did not exit when released requiring the user to kill the process with the task manager.
4. (SPR 53608) The Trim function was failing to perform correctly when trimming more than one entity at a time. The Trim function now performs the trim correctly on groups of entities.
5. (SPR 53672) Characters codes for Feature Control Symbols (FCS) were being rendered using the standard font in Cadra instead of the user's selected font. This has been corrected to use the user's selected font unless it is a TrueType font.
6. (SPR 53584) The writing of some coordinate dimensions out to AutoCAD DXF files was incorrect. Cadra would crash upon reading back this DXF file. The DXF write function has now been corrected.

Platform Support

Version 2002 has been qualified for the platforms listed in the table below. The CD distributed with this update release contains software for all the supported platforms.

Workstation	Operating System	Revision Level
Intel Pentium PCs	Windows XP Pro	All
Intel Pentium PCs	Windows 98	All
Intel Pentium PCs	Windows NT	4.0 with Service Pack 3 or higher
Intel Pentium PCs	Windows 2000	Service Pack 2

Copyright (c) 1984 - 2002 SofTech, Inc.

All rights reserved.

PROPRIETARY RIGHTS NOTICE: No part of this material may be reproduced or transmitted in any form or by any means, electronic, mechanical, or otherwise, including photocopying and recording or in connection with any information storage or retrieval system, without the permission in writing from SofTech, Inc.

Cadra-III is a registered trademark of SofTech, Inc. Cadra, Cadra-II, Cadra 3D, Cadra PC, CadraViewCheck, CadraWire, CadraWorks, CadraMCD, Cadra PDM, DesignGateway, ADRA/Open, ADT, Autogeometry, FlexDesign, and The Vault are trademarks of SofTech, Inc. All other product names and services identified throughout this documentation are trademarks or registered trademarks of their respective companies.

SofTech, Inc.
Two Highwood Drive
Tewksbury, MA 01876, USA
Telephone: 978.640.6222
Fax: 978.858.0440
Web Address: www.SofTech.com