



Cadra Version 12.1 Unix Release Notes

SofTech is pleased to provide you with Cadra - Version 12.1 on Unix. Version 12.1 includes a number of major enhancements in addition to many high priority corrections. This document will briefly review the new features and changes to Cadra. A summary of the installation process is also included toward the end of the document.

Software Licensing

The software security system for Cadra has been revised for Version 12.1. The changes to the system require your existing license be updated. The administration team at SofTech has been in contact with you to coordinate the issue of new software licenses. You must install the new license before you can begin using Version 12.1.

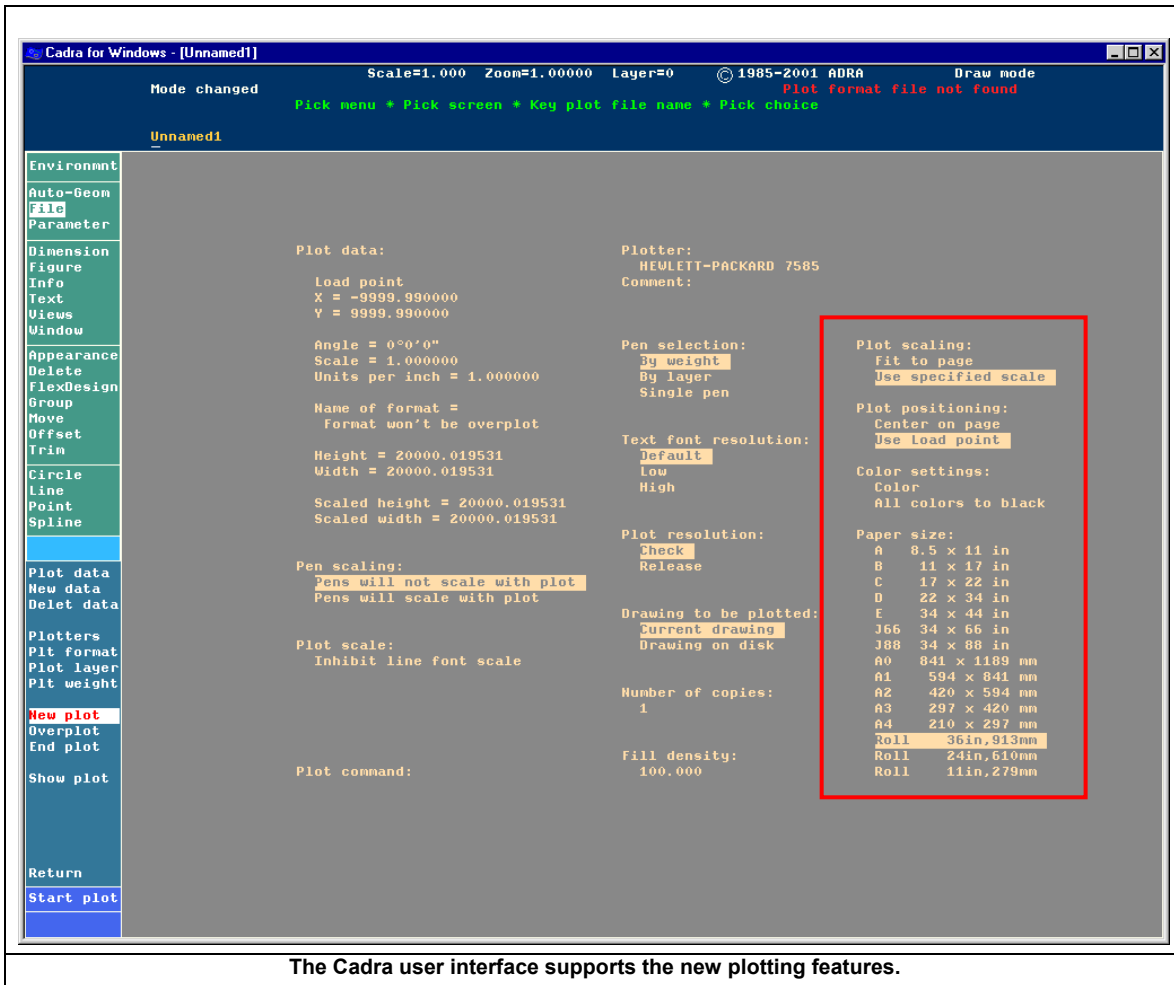
In addition to the new software license requirement, the following modifications has been implemented for Version 12.1:

- Your base Cadra license now permits full access to the AutoGeometry runtime subsystem as well as the AutoCAD DXF import and export features. In previous versions of Cadra, both these options were licensed separately.
- Licenses for CadraEDM can installed in the same manner as any other Cadra option.
- License installation of DesignGateway has been removed. DesignGateway is a separately licensed SofTech product. In previous editions of Cadra, DesignGateway could be licensed as an optional module for Cadra.
- Floating licenses for CadraWorks are now available.

If you have any questions or concerns regarding updates for your Cadra licenses, please contact your local SofTech representative or Cadra/SofTech Customer Service at 1-800-321-2372.

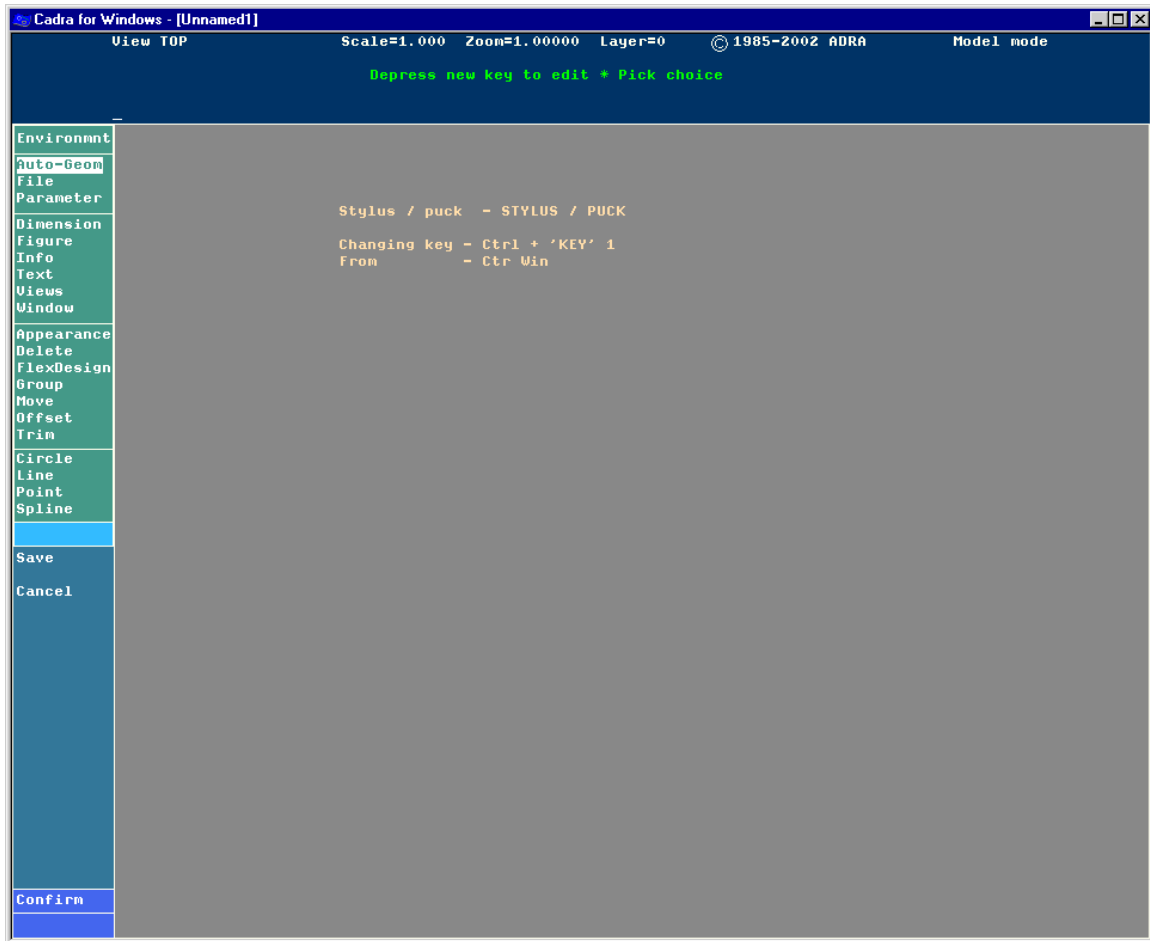
Printing Enhancements

Printing has been enhanced to make it easier to print drawings to the size paper you wish. The new Fit To Page and Center On Page options on the Plot dialog guarantees a complete WYSIWYG print will be output. Cadra will automatically compute the proper scale and translation needed for you. See picture on following page.



Customizing Mouse Settings

Programming the Pick Device has been extended to support keyboard modifiers. Device button presses done in combination with the Shift, Alt or Ctrl keys pressed can be programmed to any Cadra function. See picture on following page.



To change a key combination hit Control-F8 followed by the pick device key combination

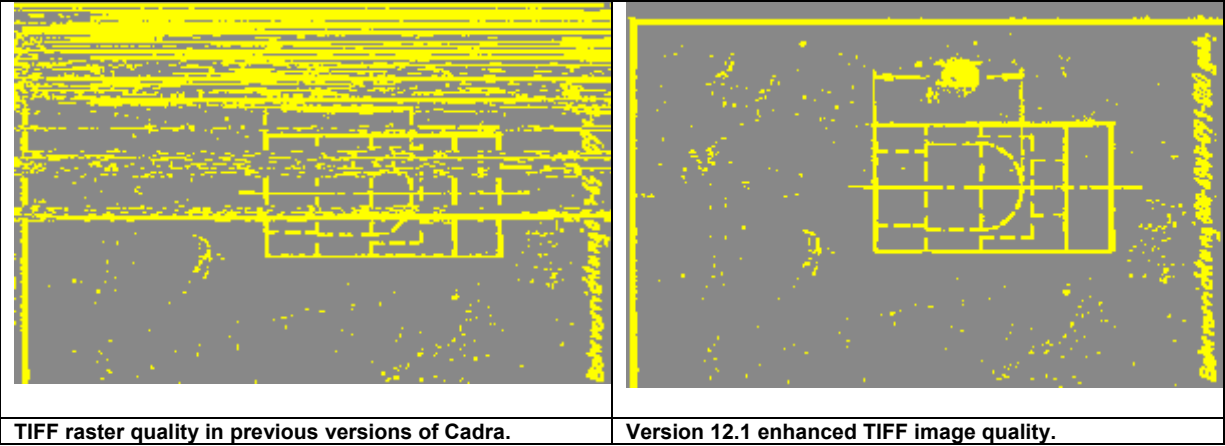
Figure Naming

Figures have been enhanced to allow the name of a named figure to be removed (using the *Figure/Show/Name* function/menu picks). This is an important enhancement because of figure name conflicts. You can now resolve this problem by removing unwanted figure names. This leaves the figure in the database as an unnamed figure.

Cadra Raster

The generation of the raster data has been modified to produce a much higher quality image. The difference is immediately noticeable when drawn to the screen as well as hardcopy output. Quality issues related to near horizontal and vertical lines and line weights have been addressed to produce a high quality image every time.

Support for TIFF Group 3 2D data compression scheme has been improved to remove unwanted smudges on an image.



MICRO CADAM Support

Cadra supports import of MICRO CADAM and its successor, Helix Design System. To better support the import of files from these systems, Cadra has been upgraded to support file extensions as shown in the table below:

Suffix	File Format
.dmn	MICRO CADAM Version 2 and Version 3
.dos	Helix Design System (container files only)
.mcd	Helix Design System (non-container files only)

Importing data files from MICRO CADAM or Helix requires Cadra to map input characters to their proper representation inside of Cadra. From our extensive experience with data sets from MICRO CADAM and Helix, a default mapping scheme has been identified and embedded in Cadra. This means that the vast majority of users will have no problem with text or dimensions when importing data files. However should the mapping need to be changed to support a unique situation, an external data file can be used to modify the default character map:

- *mcxcharmap.txt* – character mapping table for MICRO CADAM data files.
- *helxcharmap.txt* – character mapping table for Helix Design System data files.

If either file is present in your Cadra path, the file will automatically be read at startup and establish the new character map. A sample character map file is provided as part of the Cadra installation. Cadra also supports the output of character mapping files. Named *mcxcharmap_sys.txt* (MICRO CADAM) and *helxcharmap_sys.txt* (Helix), these files contain the default character maps. These are essential for understanding the default character maps and provide the best basis for developing custom character map files.

Korean Character Generation

Support has been added for Korean characters for both the UNIX and Korean Windows platform. Following the implementation of Kanji characters, Korean characters are input the same manner. To configure your system to support this new character set, define the following variable (in the *cadra.ini* file on Windows):

KP_KOREAN=1

To input Korean characters, follows these steps:

1. Go to the Text function and indicate the position for text entry.
2. Press F6 to activate the Korean text input.

3. Enter Korean text (note the F8 key toggles between English and Korean text input).

Installing Cadra Version 12.1 on Unix

Recommended System Requirements

HP/700 Series Systems:

- HP-UX 10.2
- 32 MB RAM
- 70 MB free disk space (28 MB is for Cadra documentation)

Sun Systems:

- Solaris 5.6
- 32 MB RAM
- 80 MB free disk space (28 MB is for Cadra documentation)

Before You Begin Installation

- Have your Product Authorization License (PAL) available during the installation procedure.
- For detailed information on installation options including license installation, print a copy of the **Installation Guide** in HTML format on the top level of the CD.

Installation Media

Multiple platform and languages versions of Cadra are available on the CD-ROM.

Cadra Installation

1. Log on as root. Do not change user to superuser. You must be logged on as root!
2. Create a hard disk directory to hold the Cadra files. For example:

```
% mkdir /usr/cadra
```

By default Cadra is installed in /usr/cadra. If this directory does not exist, the Installation will create it for you. If you want to specify a different location, execute the install using the following command:

```
% install /usr/applications/cadra
```

Once again, the Installation will prompt:

Directory does not exist would you like to create?

3. Insert the CD into the CD-ROM drive and create the "mount point," as described in Mounting the CD-ROM.
4. Go to the directory where the Cadra installation resides on the CD-ROM:

```
% cd /cdrom/unix
```

Note: Some machines may have a /CDROM directory. Check with your System Administrator to determine the name of your CD-ROM directory.

5. Run the installation script by typing `./install` followed by the name of the directory you created in Step 2. For example:

```
./install /usr/cadra
```

6. Installation begins by copying the Cadra distribution files from the CD-ROM to the local hard disk. Once this is complete, you will be asked:

```
Install CADRA now? (y,n)
```

Note: There are actually two installation scripts. The first is used to move the Cadra data from the CD-ROM to the destination directory. You are prompted to continue the installation. If you enter "y" a second installation script is run from the destination directory. This script adds the links to `/usr/bin` (rather than adding the Cadra location to the path). It also creates and installs the Open Windows fonts used by Cadra.

If you choose to run the second installation script later or copy the Cadra directories to another machine, be aware that the second installation script does not check for root privileges. If you do not have root privileges, the installation script will not be able to add the links or create the fonts. Cadra will run using the default fonts if you key in the program path and name.

Answer "y" to install Cadra or "n" to abort the second half of the installation.

If you answer "y" to continue with a full installation, the installation process will continue, compiling Cadra fonts and establishing links to the `/usr/bin` and `/usr/lib` system directories. The installation will inform you of its progress by printing status messages as it continues.

If you answer "n" to load Cadra onto your hard disk without making it immediately accessible to all users on the system, the installation will terminate.

7. Once you complete the full installation, activate the software by executing the following commands:

```
%rehash
```

```
%cadra
```

The Cadra installation attempts to detect the type of operating system running on your workstations in order to extract the appropriate Cadra software from the CD-ROM. If the operating system is not detected automatically, follow the procedure described in the topic [Installing to UNIX Platforms Not Detected Automatically](#).

Installing Acrobat Reader on Unix

To view the Cadra Release Notes (this file) online you will need to install the included Acrobat Reader. In the Viewers folder on the Cadra CD are two Acrobat Reader tar files, one for HP (HPUXRS.tar) and one for Sun Solaris (SSOLRS.tar).

In a command window, change the directory to where you want the Acrobat tar file installed:

```
% cd /usr/cadra/doc
```

Then type:

```
% tar -xvf /cdrom/cdr2204/Viewers/SSOLRS.tar
```

This will create a directory called SSOLRS.Install.

Change directory to SSOLRS.Install and type:

```
% ./install
```

Accept the terms of the license agreement for Acrobat.

Define the install path for Acrobat, the default is /opt/Acrobat4.

The acroread executable is in /opt/Acrobat4/bin directory.

Double click the acroread executable within the file manager; select the shell tool option within Acrobat.

In Acrobat pick File/Open and in the selection area key in /cdrom/cdr2204/Cadra V12.1-Unix Release Notes.pdf.

Note: To view this file after installing Cadra you will need to have the CD available or copy the PDF file to your hard drive. In order to view any HTML file you will need to have a web browser available.

On-line Documentation

Cadra on-line documentation is included in the Cadra 12.1 Unix distribution. It is located in the doc directory when the tar file is unloaded. The documentation is in HTML format. To view it open the doc/Contents/Html/helpset.htm HTML file.

Corrective Maintenance

Every release of Cadra addresses corrective maintenance issues our customers and partners report as problems or issues throughout the world. Over 300 problems reported by customers and resellers have been addressed in Cadra Version 12.1. The table below lists the most significant problems and issues addressed for this release:

SOFTECH SPR NUMBER	DESCRIPTION
30302	When performing multiple move/stretch operations after defining the rectangle some entities will not be stretched but rather will be just moved.
31523	Modified IGES output to include entity color mappings.
31587	Corrected license counting for primary and secondary licenses.
50114	Delete duplicates has been modified to no longer improperly remove entities from sets. All entities will be added into all original sets of the merged entities.
51668	Corrected IGES translation of German umlaut characters has been fixed.
51690	When changing dimension justification, the affected dimension will properly regenerate. In some cases, previous versions could omit portions of the dimension line.
51822	Corrected plot format status to report a proper status in all cases.
51989	Modified AutoGeometry/Layout dialog to accept long text strings to assign to a key.
52065	Corrected the appearance of single-byte Japanese Katakana characters imported from CADAM.
52152	Modified the File/Plot dialog to properly display textual content for the Japanese edition of Cadra.
52226	Modified the appearance of dimensions when finish symbols are included as part of the dimension text.
52230	Corrected a problem with entities in a set disappearing when trimmed.
52232	Corrected a discrete problem where deleting a figure can cause an "invalid database key"

	error.
52244	Fixed the creation of horizontal linear dimensions with the Justify option. Previously, when Justify option was used the text was not centered correctly.
52636	Cannot plot line fonts with fixed gap lengths. When fonted lines are trimmed the fonts are not rendered accurately.
52786	Fixed the positioning of upside down text read in from AutoCAD DWG files.
52810	The Setup/Preference/Database/Figure Layer Mode dialog for the German edition of Cadra has been modified to properly display the combo-box control.
52825	Corrected a discrete problem that caused an external figure to stretch after editing.
52838	Modified the import of DWG files containing solid crosshatch to retain the crosshatch boundaries in all cases. Previous versions could sometimes omit the boundaries.
52839	Modified the DXF import to properly handle solid crosshatching. Previous versions could sometimes omit solid crosshatch entities.
52863	Fixed AutoGeometry to correctly process a program which had set the layer visibility Quick Pick mode to ON. It had been producing a "No such menu item" error when run from the Cadra Windows user interface.
52947	Modified the IGES export function to include the output of crosshatching in cases where the option "Visible Entities Only" was selected.
52987	Modified preferences to ensure that dimension style settings are preserved in a saved profile.
53015	Corrected the IGES translator to properly translate geometry in nested figures.
53023	When crosshatch boundaries are deleted, the boundaries will be permanently removed. In some cases, previous versions would sometimes keep the boundaries.
53048	Importing exploded views from CadraWorks has been modified to work properly in all cases.
53057	Modified Cadra NC macro definitions to function correctly when arguments are supplied to a macro.
53093	Modified the dimension style dialog text to display more clearly for the Japanese edition of Cadra. Previously, this displayed poorly in Japanese Cadra.
53095	Corrected a discrete problem with Flexdesign/Change Dim function where the application could fail when working with a particular drawing.
53098	Corrected a problem with the storage of layer filters which was causing Cadra to freeze upon reading a Cadra file.
53100	Corrected the software from freezing in the event the F1 key is re-assigned to "Exit Cadra".
53106	Modified the MICRO CADAM import feature to properly handle reading .dmn container files.
53107	Modified Cadra to work properly on Windows 2000 in cases where the user is not a member of the Power Users group.
53110	Corrected a problem that could cause the Cadra application to freeze when attempting to read a Cadra file. This problem was related to layer filters – see also 53098 above.
53113	Modified horizontal dimension leader lines to generate correctly in all cases. In previous versions, certain situations could cause the leader lines to overshoot.
53120	Corrected problem reading DXF files containing cross-hatched areas bounded by splines and circular and elliptical arcs. Splines with non-uniform knot spacing were causing Cadra to hang.
53125	Modified the implementation of OLE linked files such that the auto-update feature works properly in all cases.
53136	Modified the saving of plot settings to include "All Colors To Black".
53145	Corrected the problem with opening a file when the name contains the characters "-t".
53148	Modified overlays to support overlay file names with more than 37 characters.
53158	Corrected FLM licensing software to properly log license reservations and returns for UNIX platforms.
53499	The text in balloon geometry read from a MicroCadam file was shifted from its correct position. This balloon text is now positioned correctly.
53550	Some AutoCAD DXF files that contain multiple dimension style (dimstyle) tables were causing Cadra to crash upon read. These files can now be read unsuccessfully.

Platform Support

Version 12.1 has been qualified for the Unix platforms listed in the table below. The CD distributed with this update release contains software for all the following supported platforms.

Workstation	Operating System	Revision Level
Sun Sparcstation	Sun Solaris	5.6
Hewlett Packard	HP-UX	10.2

Copyright (c) 1984 - 2002 SofTech, Inc.

All rights reserved.

PROPRIETARY RIGHTS NOTICE: No part of this material may be reproduced or transmitted in any form or by any means, electronic, mechanical, or otherwise, including photocopying and recording or in connection with any information storage or retrieval system, without the permission in writing from SofTech, Inc.

Cadra-III is a registered trademark of SofTech, Inc. Cadra, Cadra-II, Cadra 3D, Cadra PC, CadraViewCheck, CadraWire, CadraWorks, CadraMCD, Cadra PDM, DesignGateway, ADRA/Open, ADT, Autogeometry, FlexDesign, and The Vault are trademarks of SofTech, Inc. All other product names and services identified throughout this documentation are trademarks or registered trademarks of their respective companies.

SofTech, Inc.
Two Highwood Drive
Tewksbury, MA 01876, USA
Telephone: 978.640.6222
Fax: 978.858.0440
Web Address: www.SofTech.com