

CADRA RELEASE BULLETIN — Version 11.5

Cadra 11.5 is a full install. The installation instructions are below. For detailed information on installation options, refer to the Installation Guide in HTML format on the top level of the CD.

Conventions used in this document:

- Instructions and narrative text are given in this font.
- Menu choices, file names, dialog box names, selections and options within dialog boxes **are in this font**.
- Keyboard input looks like this.

Recommended System Requirements

Windows Systems:

- Microsoft Windows NT 4.0 (SP3 or SP5), Windows 95, or Windows 98
- Intel Pentium-based computer
- 64 MB RAM
- 65 MB free disk space
- Screen resolution setting of 1024 x 768

Before You Begin Installation

- Have your Product Authorization License (PAL) available during the installation procedure.
- On Windows platforms, close all other programs before proceeding.
- Cadra requires either Internet Explorer 3.02 or greater, or Netscape Navigator 3.0 or greater to read the help files.
- For detailed information on installation options, print a copy of the Installation Guide in HTML format on the top level of the CD.

Installation Media

Multiple platform and languages versions of Cadra are available on the CD-ROM.

Cadra Installation

Windows Systems:

These instructions assume an English installation on Intel, with d:\ as the CD drive.

1. Insert the Cadra CD into the CD-ROM.
2. If autorun is active, the English install procedure should start automatically.
3. If you do not have autorun capabilities or to install another language:
 - a. Click the **START** button and select **RUN**.
 - b. Type `d:\windows\intel\english\disk1\setup.exe` in the **OPEN** box.
 - c. Click **OK**.
4. Follow the Install Shield wizard to complete the installation. Note a minor

enhancement to the installation sequence has been incorporated in this release. Please refer to the **Change to Installation Procedure** in the **Release Notes** section later in this document.

5. After you have installed Cadra, reboot your system.

Troubleshooting a Hardware Lock Problem:

If your hardware lock is creating a host ID of host-ID 0000000, try the following steps. If this solution doesn't work, contact Cadra/SofTech Customer Service at 1-800-321-2372.

1. Open Windows Explorer and go to the **CADRA\DRIVERS\WIN_NT** directory (or Win95 if you are running Windows 95 instead of NT).
2. Double click **SETUPX86.exe** (or **setup95.exe**).
3. Select **FUNCTIONS / INSTALL SENTINEL DRIVERS** (the path should be the directory listed above).
4. Click **OK**.
5. Before you reboot make sure that your registry entry (**AFH000**) is set for **2**. If it is not, continue with the following steps:
 - a. Select **START / RUN / REGEDIT / OK**
 - b. Select **EDIT / FIND**
 - c. Key in **AFH000**
 - d. Double click the **a/b** icon to change default value to a **2**

You may need to reboot your system.

Release Notes — Cadra V11.5.0

OpenGL and Windows 95

An enhancement was added in an earlier release of V11 for hidden line removal when projecting from 2-D views into a 3-D view. This enhancement requires **OpenGL 1.1**, which is included as part of the Windows 95 OSR 2 release. If you are running a version of Windows 95 prior to OSR 2 the necessary OpenGL software can be obtained from:

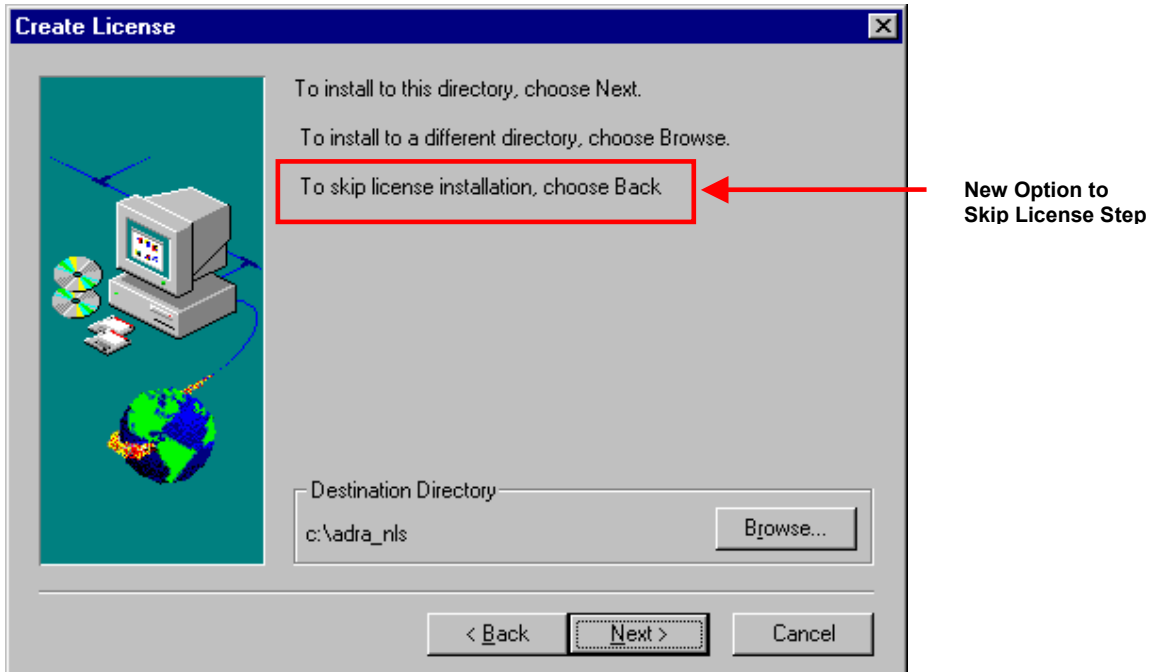
<ftp://ftp.microsoft.com/softlib/mslfiles/opengl95.exe>

Check the Microsoft READ ME file for installation instructions.

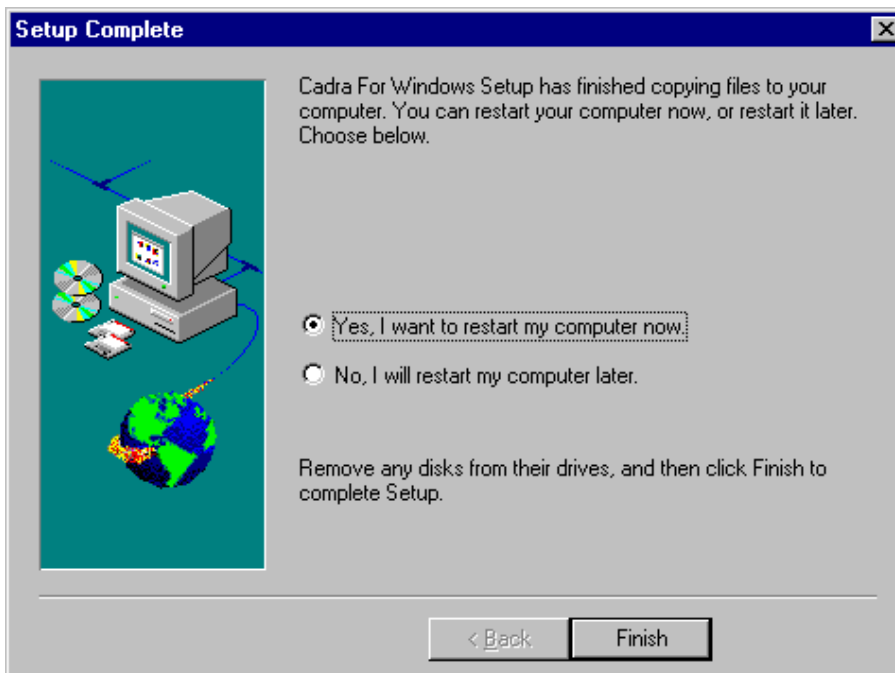
Change to Installation Procedure

A change in the Cadra installation procedure has been introduced in V11.5 that makes installing a new version of Cadra easier if there are no license changes for your installation. The installation procedure reads your **cadra.ini** file and determines the location of your licenses then allows you to skip license installation on the **Create License** dialog box.

You may skip the license portion of the Cadra installation procedure by clicking the **Back** button on the **Create License** dialog box.

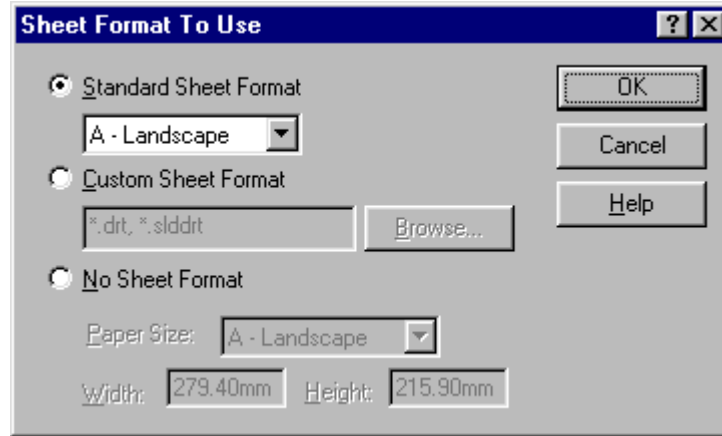


This brings you to the **Setup Complete** dialog box where you complete the Cadra installation process by choosing whether or not to restart your computer.



CadraWorks — Change In Behavior

When generating projected views from a SolidWorks model via **File > New > Drawing** in SolidWorks, the SolidWorks dialog box shown below will appear the first time that views are generated during the SolidWorks session. Providing the SolidWorks session is not closed, subsequent view generation operations will not show this dialog box.



You must click either **OK** or **Cancel** to close this dialog box before Cadra will start and the views are generated. SofTech has logged a bug report with SolidWorks regarding this issue.

SPRs Fixed in V11.5

The following SPRs have been fixed in this release:

SPR 52098

Problem: Choosing **RevMerge/Compare** on the **Overlay** dialog box generates a “*No local license, server not responding*” error message if you do not have a license for ADT or CDT.

Solution: **RevMerge/Compare** no longer requires an ADT or CDT license.

SPR 52650

Problem: The Route Line license is not released if Route Lines are deleted from the Cadra drawing.

Solution: Fixed.

SPR 52718

Problem: When adding dimensions, post text has to be added as a separate operation whereas post text used to be added dynamically.

Solution: Post text can be added dynamically again.

SPR 52719

Problem: An Autogeometry program designed to select text entities only selects the correct entities when run in Debug mode.

Solution: The program now selects the correct entities.

SPR 52727

Problem: Saving a Cadra drawing after relocating a figure gives an “*Internal invalid database key*” error message.

Solution: Fixed

SPR 52769

Problem: Dimension arrows change from **Open** to **Filled** when imported into Cadra from a DXF file.

Solution: This problem was fixed in a prior version.

SPR 52790

Problem: Nurtape does not function correctly.

Solution: Fixed.

SPR 52792

Problem: AGP programs added to the **User Menu** are not available in CadraViewCheck.

Solution: **User Menu** items are now available.

SPR 52796

Problem: Drawing items cannot be selected after using the scroll bars.

Solution: Fixed.

SPR 52811

Problem: On-line Help manual will not launch in CadraViewCheck.

Solution: Fixed.

SPR 52862

Problem: De-skewing a raster image gives a “*Database key*” error

Solution: Fixed.

SPR 52865

Problem: Cadra will not install on some systems with Windows Service Patch 2 installed.

Solution: See the *Open GL and Windows 95* note above.

SPR 52888

Problem: Layer 0 (the active layer) cannot be turned off (made invisible) when using Cadra ViewCheck with the Windows interface.

Solution: Visibility of Layer 0 can now be turned off.

SPR 52892

Problem: Layer numbers changing after translating to either DXF or DWG.

Solution: Fixed.

SPR 52921

Problem: Cadra crashes if you try to transfer a figure whose name contains the maximum number of characters (20) to another file that contains the same figure name.

Solution: Cadra no longer crashes.

SPR 52924

Problem: Blanked entities become visible after saving as DWG.

Solution: Fixed.

SPR 52951

Problem: Multi-line text containing consecutive line feed is moved, missing lines, or both.

Solution: Fixed.

SPR 52966

Problem: Exporting a Cadra drawing to DTF writes text weights on entities although the zero text weight options are set in Preferences.

Solution: Fixed.

SPR 52992

Problem: **Save** or **Save As** to a network drive deletes the Cadra file

Solution: This was a rare occurrence seen on very slow networks. A fix has been implemented to prevent this occurring.

SPR 52999

Problem: Cadra does not retain the correct view orientation when projecting views from SolidWorks.

Solution: Projected views now maintain the correct orientation.

SPR 53001

Problem: Active layer changes when a figure is inserted from a library file.

Solution: Fixed.

SPR 53002

Problem: Zero line weight options for DRT/DTF translations do not work for background translations.

Solution: Zero line weight options now work for background translations. The settings must be saved in **prf.sys** before the background translations occur.

SPR 53020

Problem: Previously blanked geometry on wrong layer after Cadra > DXF > Cadra translations.

Solution: Fixed.

SPR 53021

Problem: Drawing extents not correct after Cadra > DXF > Cadra translations.

Solution: Drawing extents are now calculated correctly.

SPR 53038

Problem: Secondary dimensions cannot be set to fractional Feet-Inch using the Cadra standard notation of -32 to indicate fractions are expressed as $\frac{1}{32}$ inch.

Solution: Cadra now accepts a negative value to indicate the numerator for fractions.

SPR 53041

Problem: Cross-hatch is not displayed correctly following DXF > Cadra translation.

Solution: Fixed.

SPR 53045

Problem: Duplicate of 52837

Solution:

SPR 53049

Problem: REFSYS produces incorrect motion

Solution: Motions to geometry created with REFSYS are now correct.

SPR 53050

Problem: Display of Profile incorrect during Profile creation when other than TOP workplane is in effect.

Solution: Profiles now display in the correct orientation.

SPR 53054

Problem: Internal figures are converted to external figures during translation of MicroCadam files.

Solution: Fixed.

Copyright (c) 1984 - 2000 SofTech, Inc.

All rights reserved.

PROPRIETARY RIGHTS NOTICE: No part of this material may be reproduced or transmitted in any form or by any means, electronic, mechanical, or otherwise, including photocopying and recording or in connection with any information storage or retrieval system, without the permission in writing from SofTech, Inc.

Cadra-III is a registered trademark of SofTech, Inc. Cadra, Cadra-II, Cadra 3D, Cadra PC, CadraViewCheck, CadraWire, CadraWorks, CadraMCD, Cadra PDM, DesignGateway, ADRA/Open, ADT, Autogeometry, FlexDesign, and The Vault are trademarks of SofTech, Inc. All other product names and services identified throughout this documentation are trademarks or registered trademarks of their respective companies.

SofTech, Inc.
Two Highwood Drive
Tewksbury, MA 01876, USA
Telephone: 978.640.6222
Fax: 978.858.0440
Web Address: www.SofTech.com