



Cadra 2008 Release Notes

SofTech is pleased to provide you with this Cadra Release. This release adds support for the Windows Vista platform, upgrades the support for AutoCAD and SolidWorks and greatly enhances the Text Input and Edit dialog. This is primarily a maintenance release so the emphasis is on addressing high priority corrections. The release also includes a number of minor enhancements. This document will briefly review the new features and changes to Cadra. A summary of the installation process is also included toward the end of the document. The enhancements include:

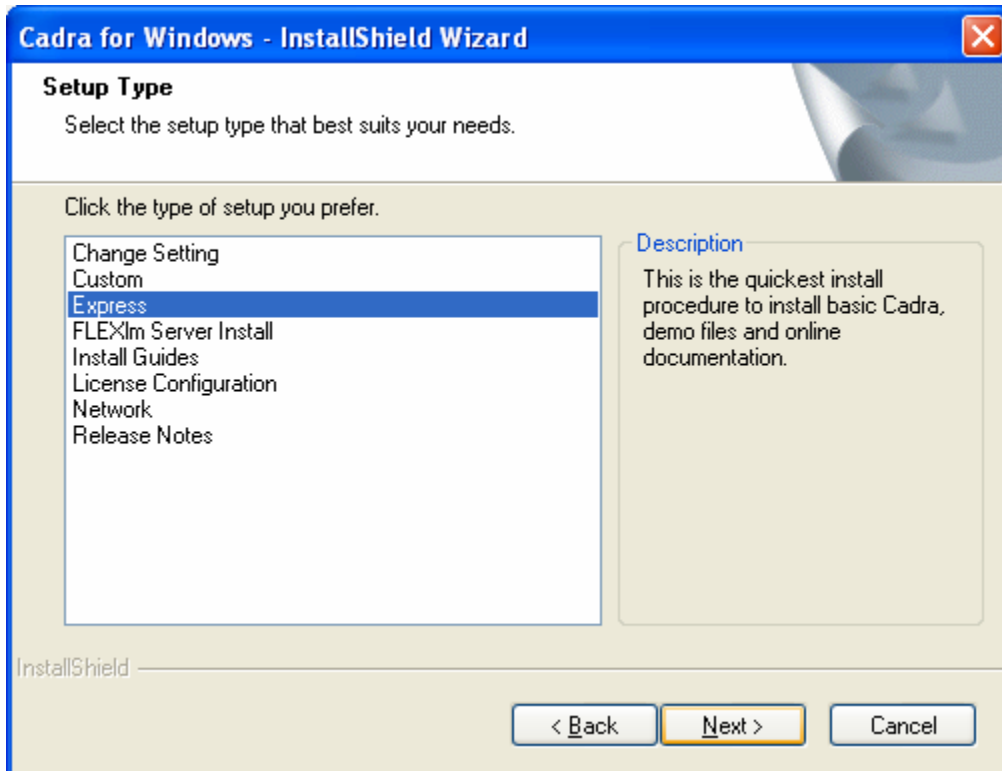
1. Added support for the Windows Vista platform.
2. The installation process has been enhanced to allow installing the (a) FLEXlm License Server, the (b) Cadra and FLEXlm Server Installation Guides and the (c) Cadra Release Notes to be installed using the same installation process as is used to install the Cadra product.
3. Enhanced the Text Input and Edit dialog to allow the display and altering of text attributes such as font, color, text size, spacing, justification and case. Also added is the ability to check the spelling of text in the dialog.
4. Added support for reading AutoCAD 2007 and 2008 files.
5. CadraWorks now supports SolidWorks 2008.
6. Added the ability to read some corrupted Cadra files.

Enhanced the Installation Process

The installation process has been changed to fully integrate the installation or viewing of the following components:

1. FLEXlm License Server
2. Cadra and FLEXlm License Server Installation Guides
3. Cadra Release Notes

The installation type selection page then changes to the following:



These new items can also be chosen as a part of a custom installation.

For more details about the installation process please refer to the **Cadra for Windows Installation Guide**.

Installation Warning Messages

Note that the Windows operating system may issue some somewhat ominous warning messages when uninstalling Cadra. This is due to the installation process accessing the cadra.ini file located in the Windows system directory (windir).

The first message is:

“Files that are required for Windows to run properly have been replaced by unrecognized versions. To maintain system stability, Windows must restore the original versions of these files. Insert your Windows XP Professional CD-ROM now.”

When you see this message please select the **Cancel** button to dismiss it.

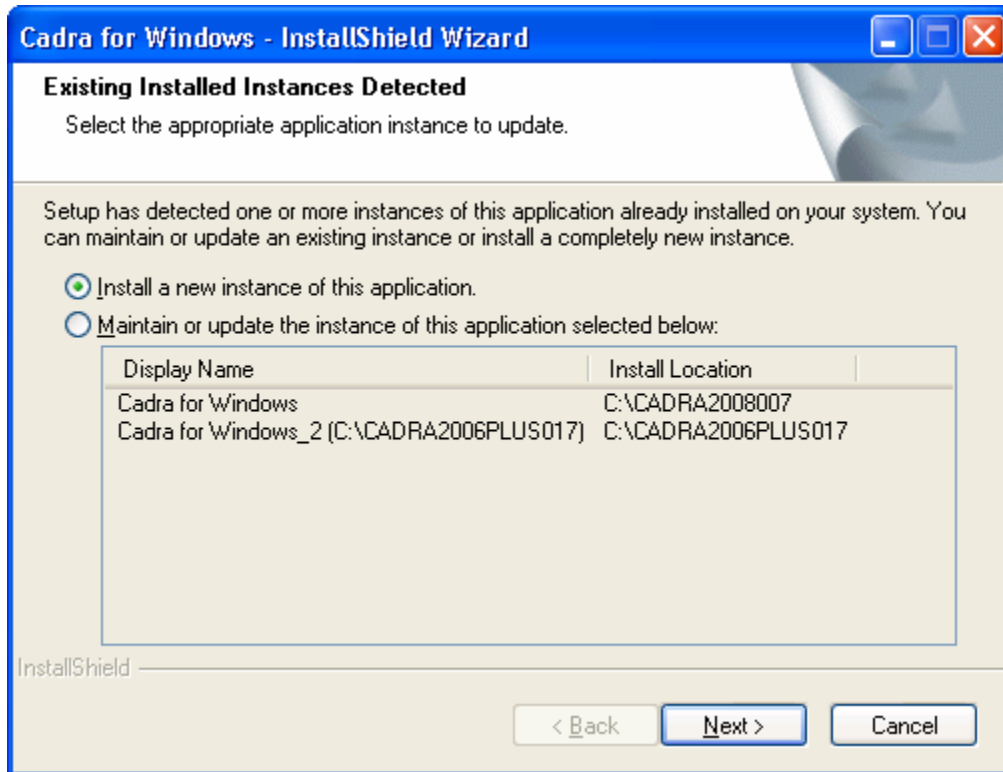
The second message is:

“You chose not to restore the original versions of the files. This may affect Windows stability. Are you sure you want to keep these unrecognized file versions?”

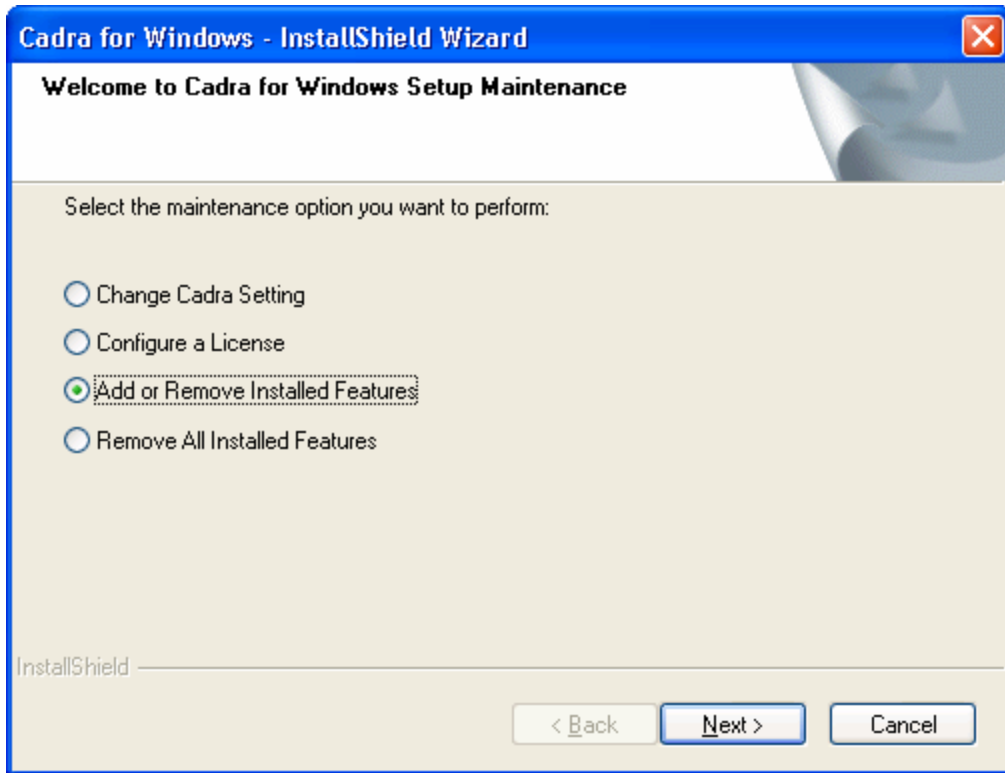
When you see this message please select the **Yes** button to dismiss it.

Notes on Installation Maintenance

When installing a new version of Cadra on a system that already has a previous version installed you will see the following dialog:



When installing a new version of Cadra it is recommended that you choose **Install a new instance of this application**. If you choose **Maintain or update the instance of this application selected below** and select a different version to update, like choosing a Cadra 2006 version when installing Cadra 2008, Cadra 2008 will be installed over the Cadra 2006 installation at the same disk location. If, after installing Cadra 2008 you want to add a feature to the existing 2008 installation, like the FLEXIm License Server, you can rerun the Cadra 2008 installation setup, choose to **Maintain or update the instance of this application selected below** and select the previously installed Cadra 2008 installation. This will then bring up the following dialog allowing you to modify the Cadra 2008 installation. This is the same dialog that is displayed when modifying the Cadra installation through **Add or Remove Programs** from the **Control Panel**.



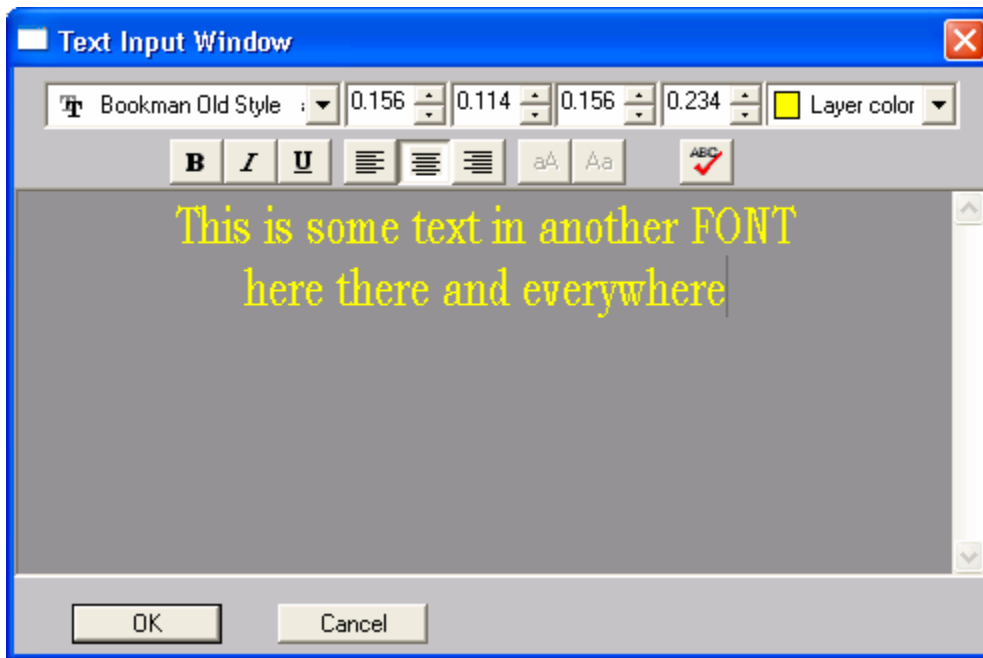
Enhanced the Text Input and Edit dialog

The Text Input and Edit dialog box has been enhanced to allow altering the following text string parameters:

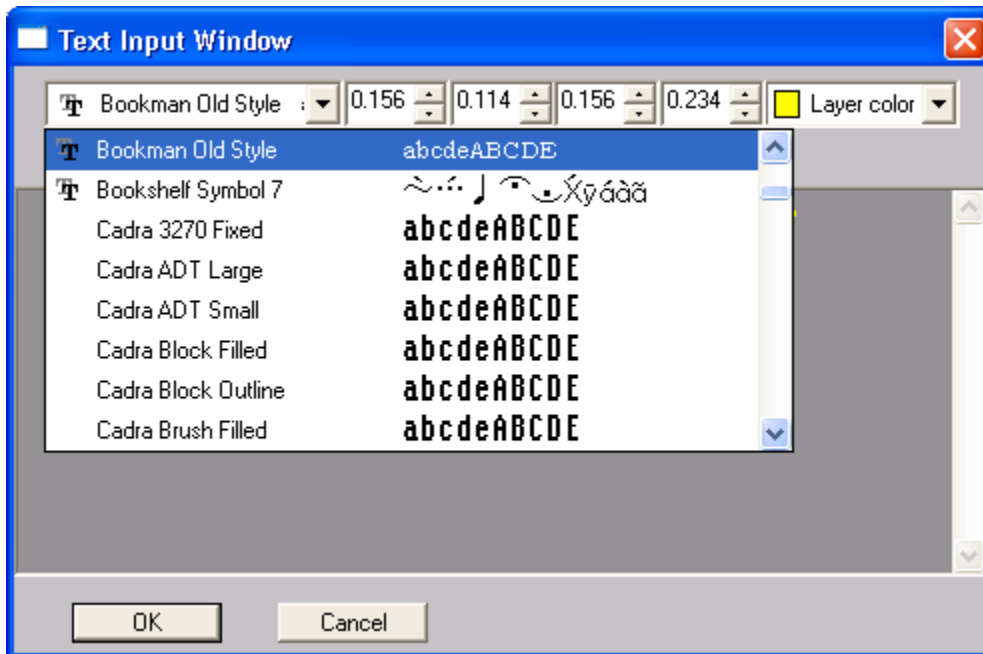
- Text font (Cadra and TrueType fonts)
- Text size (width and height)
- Inter-Character and Inter-Line spacing
- Style (bold, italics, underline)
- Color
- Justification (left, right, center)
- Text case (upper, lower)
- Spell check

The feature control symbols will only be enterable if a text string uses one of the Cadra fonts. Otherwise the Symbol Display key will not be displayed.

Font Name Height Width Char Sp Line Sp Color



Font Name: This is a list of all of the available fonts:



Other than some of the Cadra outline fonts specifically called outline, all other fonts are the filled versions. If you want other outlined fonts you will need to use the Setup/Text Fonts/Autoload Text Fonts dialog.

Character Height: This is the character height.

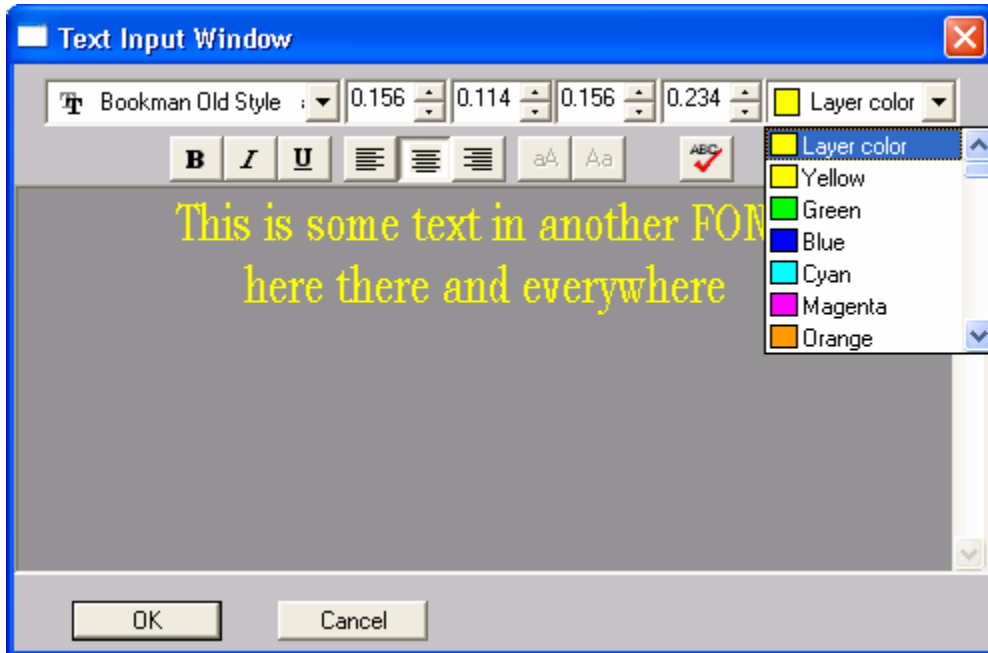
Character Width: This is the character width.

Inter-Character Width (Char Sp): This is the horizontal space separating adjacent characters.

Inter-Line Width (Line Sp): This is the vertical space separating lines of text.

Note that character height and width does not change in the Text Input dialog for Cadra fonts. Also Inter-Character Width and Inter-Line Width are not accurately reflected in the dialog box for any font. All of these characteristics are accurately reflected in the text rendered in the Cadra drawing.

Text Color: This field allows setting the color of the text. This will include a choice of up to 200 colors plus a choice for layer color.

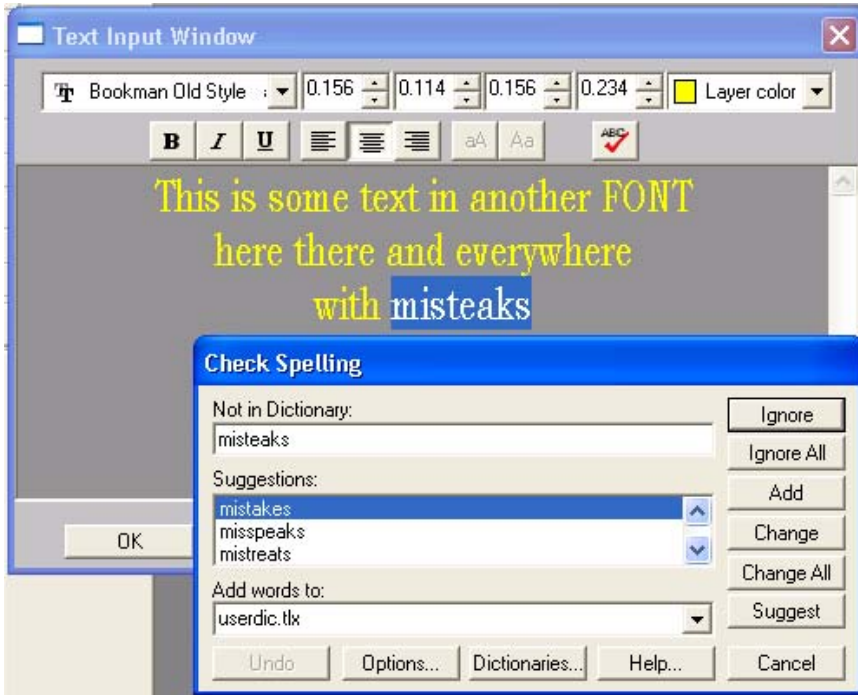


Font style: This allows the setting of bold (B) state, italics (I) state and underline (U) state.

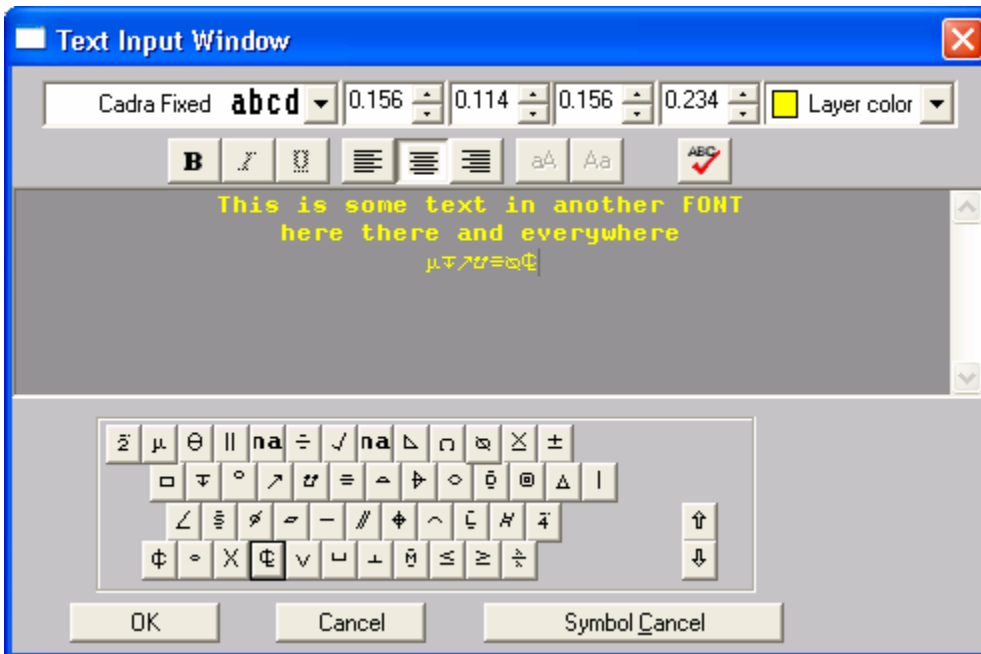
Justification: This is text left, right and center horizontal justification.

Case: This allows setting the case (upper, lower) of a selected set of characters.

Spell Check: This allows checking the spelling of all the text in the dialog.



If Cadra fonts are used the ability to add Feature Control characters will be enabled as shown below:



The following shows the new text dialog on a Japanese/Korean system. Note that this dialog only allows altering text justification, changing character size and spacing and text color.



Ability to read some corrupted Cadra files

It is now possible to read in some corrupted Cadra files. Whereas previously Cadra would have refused to read these files at all, now it will read them and you may see one of the following messages.

Both of these messages mean that Cadra has encountered a corrupt partition (representing either a view or a figure). The <number> in the message is the partition number. View partition numbers range from 0 to 200 and figure partition numbers range from 201 and up.

Partition <number> truncated, read incomplete

This message means Cadra was able to read in a portion of the partition. Therefore a portion of the partition as originally defined in the file has been lost.

Partition <number> lost, read incomplete.

This message means Cadra was unable to read any of the partition. Therefore the entire partition as originally defined in the file has been lost.

Installing the Cadra 2008 Release

Recommended Minimum System Configuration

Windows Systems:

- Microsoft Windows Vista Business, XP Pro SP2 and x64, 2000 (SP2), or 2003 Server SP1
- The processor required depends upon the operating system. Please refer to **Platform Support** at the end of this document.
- 128 MB RAM minimum, 512 MB RAM recommended for most operating systems
- 1 GB RAM is required for Windows Vista business
- 65 MB minimum free disk space
- Screen resolution setting of 1024 x 768 pixel minimum, 1152 x 864 pixel recommended

Before You Begin Installation

- Have your Product Authorization License (PAL) available during the installation procedure.
- On Windows platforms, close all other programs before proceeding.
- Cadra requires a current version of a web browser such as Internet Explorer or Netscape Navigator or Mozilla Firefox to read the help files.
- For detailed information on installation options including license installation see the **Cadra for Windows Installation Guide**.

Installation Media

Multiple platform and languages versions of Cadra are available on the CD-ROM.

Cadra Installation

Windows Systems:

These instructions assume an English installation on Intel, with d:\ as the CD drive.

1. Log on to an Administrator account or one with Administrator privileges.
2. Insert the Cadra CD into the CD-ROM.
3. If autorun is active, the installation procedure should start automatically.
4. If you do not have autorun capabilities:
 - a. Click the **START** button and select **RUN**.
 - b. Type d:\Cadra2008Setup.exe in the **OPEN** box.
 - c. Click **OK**.
5. Follow the Install Shield wizard to complete the installation.
6. After you have installed Cadra, reboot your system.

Troubleshooting a Sentinel Hardware Lock Problem:

If your hardware lock is creating a host ID of host-ID 0000000, try the following steps. If this solution doesn't work, contact Cadra/SofTech Customer Service at 1-800-321-2372.

1. Open Windows Explorer and go to the **CADRA\DRIVERS\WIN_NT** directory.
2. Double click **snti_install.exe**.
3. Select **FUNCTIONS / INSTALL SENTINEL DRIVERS** (the path should be the directory listed above).
4. Click **OK**.
5. Before you reboot make sure that your registry entry (**AFH000**) is set for **2**. This value can be set in Cadra run using the older Cadra GUI. Select **Parameter/License** and then set the **HardLock/Local Card** toggle to enable a hardware lock. Alternatively, continue with the

- following steps:
- a. Select **START / RUN / REGEDIT / OK**
 - b. Select **EDIT / FIND**
 - c. Key in AFH000
 - d. Double click the **a/b** icon to change default value to a **2**
- You may need to reboot your system.

Corrective Maintenance

Every release of Cadra addresses corrective maintenance issues our customers and partners report as problems or issues throughout the world. The table below lists the most significant problems and issues addressed for this release:

SOFTECH SPR NUMBER	DESCRIPTION
52090	Fix dimensioning between line and a point.
53099	Fixed errors have exceeded message within DWG/DXF log
54005	Screen menu disappears after changing the window size
55828	It takes an extended period of time to read this AutoCAD file
55843	After first plot A0 defaults back to A size
55972	Save this file as a different name results in an error. Read of this corrupt file was improved.
56353	Read in the dxf file, there geometry filled that should not be
56659	Error reading in DWG file
56912	Overlay filename of title bar shows previous opened file name
57008	Can not us existing text as post text on a dimension
57019	Unable to change a spline within a figure
57089	Incorrect behavior with group, dim, view win
57129	Move cut and Paste of large areas with figures returns error
57130	Read backup file get database corruption. Read of this corrupt file was improved.
57157	Overlay mode, show overlay button disappear after plotting
57160	Add FlexLM server install, install guides, release notes to Cadra installation options
57179	Unable to read DWG/DXF file correctly
57185	Error when trying to plot drawing
57187	Constructing a figure in this file results in Cadra hanging
57243	Write DWG/DXF get error
57249	Get Software error when reading in file, only when loading external figure directory
SPR1015	File extension not correct after figure transfer
SPR1016	When a figure is inserted over 32766, the instance count is set to zero
SPR1018	Cadra crashes when mouse crosses over entity with insight active after DXF read translation
SPR1021	Can not open file: database corruption. File cannot be opened. Error message improved.
SPR1026	A backup file is corrupt. Read of this corrupt file was improved.
SPR1027	Scroll bar disappears after figure insert
SPR1030	Read in iges file and circles and lines becomes ellipses
SPR1034	Part of the DXF file not reading into Cadra
SPR1035	draw error deleting xhatch pattern and then undo
SPR1043	Pasted figure is changed to a different figure which has the same name
SPR1049	Move, cancel, choice multiple times not correct behavior
SPR1082	Writing a .pra with cutout creates a very large .pra file
SPR1092	Cadra crashes reading this DWG file
SPR1105	Reading some AutoCAD dwg files would crash Cadra.
SPR1115, SPR1119, SPR1120	Some files written out from Cadra containing crosshatches inside of sets caused data corruption when reread back into 2006Plus SP2
SPR1125	Could get a bad error message, IDS_WARN_INV_LIC_KEY, during installation.
SPR1156	Plot of a specified file caused a software failure.
SPR1157, SPR1159, SPR1160, SPR1161	Get invalid entity type errors when working with figures, creating and copying.
SPR1162	Move/copy function causes invalid entity type error.
SPR1165	Software failure on file/new after load of an external figure.
SPR1175	Cannot use mouse button for fit window function.

Platform Support

This release has been qualified for the platforms listed in the table below. The CD distributed with this update release contains software for all the supported platforms.

Workstation	Operating System	Revision Level
1 Gigahertz (GHz) 32-bit (x86) processor or 1-GHz 64-bit (x64) processor. For more information visit this link: http://support.microsoft.com/kb/919183 .	Windows Vista Business	
Intel Pentium/Celeron family, or AMD K6/Athlon/Duron family, or compatible processor recommended	Windows XP Pro	Service Pack 2
Computer with a supported processor: AMD Athlon 64, AMD Opteron, Intel Xeon with Intel EM64T support, Intel Pentium 4 with Intel EM64T support.	Windows XP Pro 64 bit Edition	Service Pack 1
Pentium-compatible CPU – Pentium 3 minimum, Pentium 4 recommended.	Windows 2000	Service Pack 2-4
Requirements vary by edition. See link provided: http://www.microsoft.com/windowsserver2003/evaluation/sysregs/default.mspx	Windows Server 2003	Service Pack 1

Copyright (c) 1984 - 2008 SofTech, Inc.

All rights reserved.

PROPRIETARY RIGHTS NOTICE: No part of this material may be reproduced or transmitted in any form or by any means, electronic, mechanical, or otherwise, including photocopying and recording or in connection with any information storage or retrieval system, without the permission in writing from SofTech, Inc.

Cadra-III is a registered trademark of SofTech, Inc. Cadra, Cadra-II, Cadra 3D, Cadra PC, CadraViewCheck, CadraWire, CadraWorks, CadraMCD, Cadra PDM, DesignGateway, ADRA/Open, ADT, Autogeometry, FlexDesign, and The Vault are trademarks of SofTech, Inc. All other product names and services identified throughout this documentation are trademarks or registered trademarks of their respective companies.

SofTech, Inc.
59 Composite Way, Suite 401
Lowell, MA 01851, USA
Telephone: 513.2700
Fax: 978.458.4096
Web Address: www.SofTech.com