



Cadra 2005 Unix Release Notes

SofTech is pleased to provide you with this Cadra Release. This release includes a number of enhancements in addition to some high priority corrections. This document will briefly review the new features and changes to Cadra. A summary of the installation process is also included toward the end of the document. The enhancements include:

1. **New Database Version.**
2. **Crosshatch Editing** - Ability to edit crosshatching and pattern filled entities after they have been created.
3. **Multi-view Select** – Allow the user to select and modify entities that are in different views with one operation.
4. **Change to Entity Selection Behavior** – Single-view entity selection behavior has been made more consistent across all functions.
5. **Raster Improvements** - Enhanced the Raster function capabilities and reorganized the menus to allow access to all raster options from a single place. Added the ability to allow the user to rasterize geometry anywhere on the screen.
6. **Increased Figure Name Size** – Figure names can now be up to 256 characters.
7. **Increased Size of Text Notes** – Text notes can now be much longer than before.
8. **In-Place Figure Editing of Nested Figures** - The user can now select a figure within a figure (within a drawing) to be edited with **Figure/Edit Inplc.**
9. **Edit NC Labels** – Added the ability to edit NC labels added to entities by CadraNC.

New Database Version

Some of the changes added to Cadra 2005 have required establishing a new Cadra database version. These changes include:

- The maximum figure name size has been increased.
- The maximum size of text notes has been increased.

This means that files written out from Cadra 2005 in the default format will not be readable by previous versions of Cadra. When writing out files to older Cadra formats all figure names will be truncated to 20 characters with unique names and long text notes will be broken up into smaller notes with less than 800 single-byte characters in each. A dialog warning of data loss when saving to older Cadra versions will be displayed regardless of the existence of long figure names and long text notes.

AutoGeometry programs that use the READNM, READTX and SYSTR (type 2) routines may now read figure names and text strings that exceed the length limits imposed in previous versions of Cadra. Therefore the arrays used to contain these names and strings may need to be adjusted if Cadra files are created using longer figure names and text strings.

Crosshatch Editing

This feature gives the user the ability to edit crosshatching and pattern filling in entities after such entities have been created. A new menu option **Edit Hatch** has been added to the **Line/X-Hatch** menu. It will bring up a new submenu that will allow the user to modify a previously defined pattern fill or cross-hatching by: 1) changing the pattern number; 2) the angle; 3) the scale or distance; 4) the origin; and/or 5) the resolution.

A new feature has been added to both crosshatch creation and editing that allows the user to specify the parameter settings by selecting a second crosshatch or pattern fill. The newly modified pattern fill or crosshatch has the same pattern number, angle, scale or distance, origin, and resolution as the indicated crosshatch or pattern fill.

Since some crosshatch and pattern fill operation may take a long time, <CTRL-C> is now supported throughout the entire crosshatch and pattern fill menu.

The number of user-defined patterns supported by Cadra has been increased from five to sixteen.

Two new menu options: **Copy** and **Edit Hatch** have been added to the **X-Hatch** menu.



The **Copy** Option will allow the user to specify the parameters for a crosshatch or pattern fill by selecting an existing crosshatch or pattern fill. If a boundary is already selected, it will do the pattern fill or crosshatch as soon as the pattern or crosshatch is selected. All the parameters (angle, distance or scale, origin, and resolution) will be the same as the selected pattern or crosshatch. The line font will also be the same as the template chosen. If the boundary is not selected yet, then the **Copy** option will change all of the default parameters to be consistent with the selected crosshatch or pattern so that the user can simply pick choice to create the crosshatch or pattern fill once the boundary is chosen without having to change the parameters.

Note: when using the **Whole View** option all crosshatch and pattern fill entities in the current view will be blanked and therefore not selectable by the "Copy" option.

The **Edit Hatch** Option in the **X-Hatch** menu will bring up the edit X-Hatch sub-menu. Double-clicking on an existing crosshatch from any function in the system will also bring up the **Edit Hatch** sub-menu.



The **Select** option allows the user to select a crosshatch or pattern fill entity that he would like to modify. Once a crosshatch and pattern fill is selected, the existing parameters for the crosshatch or pattern fill will be displayed at the top of the screen much as they are during crosshatch and pattern fill creation. They will be updated as the remaining options below are used to modify the parameters.

```

View TOP          Scale=1.000  Zoom=3.37861  Layer=0          © 1985-2005 ADRA          Model mode
Selected a Pattern          X=-0.7476, Y=-0.4156
Select Xhatch or Pattern to be modified * Locate Rectangle Corner * Pick Menu * Pick choice
Angle=0.00000  Scale=1.00000  Origin=0.00000,0.00000  Resol=Medium  Pattern=ALUMINUM1
  
```

Copy is the only **Edit Hatch** option that will operate on multiple boundaries. If the user selects multiple boundaries, then **Copy** will appear in the choice box and picking **Copy** from either the Choice box or from the menu will send the user to the **Copy** option. See details below.

The **Angle** option will allow the user change the angle of the pattern or crosshatch by keying in a new angle.

The **Scale/dist** option will allow the user change the distance for a crosshatch or the scale for a pattern by keying in a new value.

The **Origin** option will allow the user to change the origin of the crosshatch or pattern by: 1) keying in a new value, locating a new origin, or selecting an entity.

The **Xhatch fill** option will switch a pattern fill to a crosshatch.

The **Patrn fill** option will switch a crosshatch to a pattern fill using the most recently selected pattern number.

The **Patterns** option will bring up the pattern sub-menu and/or dialog, which will allow the user to select a different pattern.

The **Resolution** option will allow the user to key in a new resolution number: 1 (low), 2 (medium), 3 (high).

The **Copy** option allows the user to select a crosshatch or pattern fill entity to use as a template for the selected xhatch entity. The changes take place immediately upon selecting the crosshatch or pattern fill template. All the parameters (angle, distance or scale, origin, and resolution) will be the same as the template as well as the line font. The color, layer, and entity

mode (view or model) of the modified crosshatch or pattern fill will be unchanged. The **Copy** option is not allowed until one or more crosshatch or pattern entities are selected.

Except for the **Copy** option, changes will take effect only when the user picks Choice.

Multi-View Select

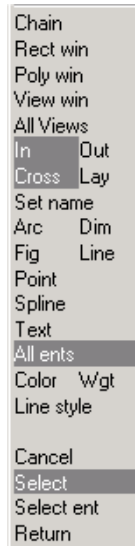
This feature will allow the user to select and modify entities that are in different views in a single operation. This will save time and effort from previous versions, which required the user to make changes separately for each view in the drawing. Supported commands have been taken from the list commands that accept multiple entities in the same view. However, not all of these were appropriate. For example, cross-hatching is still limited to a single view. Generally the supported commands are those that change some attribute of an entity, such as color, line style, layer, dimension style, text height, etc.

In previous versions of Cadra, the user could only perform operations on entities in a single view. For example, to change the dimension style of every dimension in a drawing, the user would need to perform the same series of steps for each view in the drawing. With multi-view select the user only needs to do the operation once and it will apply to the entire drawing if so chosen.

The user uses the following combination of keystrokes to cycle through the multi-view options: <shift> - <Choice> where Choice is the asterisk button on the function keypad. This allows the user to toggle through the various multi-view selection states: 1) all views including draw mode entities; 2) all views excluding draw mode entities; and 3) current view. When the "current view" option is picked, all multi-entity select commands will work exactly the way they did in Cadra 2004. When either of the other 2 options is chosen, a rectangular or polygonal window will select entities across all views.

The current state of the multi-view toggle will be saved to the profile so that the proper settings can be remembered between sessions.

Second the IMS SEL multi-entity select menu has a new menu item **All views** which works similar to **View win** option, except that it selects all entities (of a given entity type, layer, font, etc) in all the views allowed by the current state of the multi-view select toggle. Also, after picking the **View win** option, if the user selects an entity allowed by the current select masks in a different view, then all of the allowable entities in that view will be highlighted and added to the list. This allows the user to pick two or more entire views without necessarily doing all views in the drawing. The new menu option is shown here:



The **View win** option highlights all entities of the specified type and parameters in the current view. With this enhancement, the user may select an entity from a different view and hit **View win** again to select all entities of the specified type and parameters in the new current view. This will allow him to select all the entities in two or more views without selecting all the entities in all the views.

The **All views** option is really a cycle, and switches between **All views**, **Views+draw**, and a blanked line depending on the setting of the multi-view toolbar button. This option will only appear if the current command supports multi-view select.

The **All views** option works much like the **View win** option except that it selects all the entities of the specified type and parameters in all the Views.

The **Views+draw** option works much like the **View win** option except that it selects all the entities of the specified type and parameters in all the Views including draw mode entities.

The set of operations that make sense across views is a subset of the Cadra operations that allow multiple entities in the first place.

The following operations make sense in a multi-view environment and are supported:

1. Changing the appearance of a set of entities, including line styles, line weights, colors, arrow types.
2. Changing dimension styles.
3. Change text parameters.
4. Delete.
5. Blank.
6. Move (New Layer, New View, New Mode only)
7. Edit xhatch copy

The following operations do not make sense in a multi-view environment and do not support selection across views:

1. X-Hatch (except for Edit Hatch/Copy).
2. Group select
3. Dimension align
4. View project/extrude, section line
5. Group set/trap

6. Flex design
7. Raster
8. Detail copy/show
9. Offset chain
10. Group cutout change/basic
11. Relimit

The best way to use multi-view select is to choose the operation desired **first** and then select the entities to which the operation is to be applied **second**. Otherwise as some operations do not support multi-view select entities selected first may be deselected when the operation is subsequently chosen.

Change to Entity Selection Behavior

As a consequence of the addition of multi-view selection the behavior of single-view selection has also been changed for this release. It was possible in previous versions of Cadra to select entities in functions (other than **Group**, like **Move** and **Delete**) and then switch to another function keeping the set of entities previously selected in the select group. You could then operate on that same set of entities in the new function. With this release this cross-function selection behavior has been removed except in the case of the **Group** function. This will make cross-function selection consistent across **all** functions and will also make the de-selection of entities less cumbersome as de-selection will automatically occur when a new function is chosen (except for **Group**). This could, however, affect existing autogeometry programs that relied on the previous behavior.

Raster Improvements

The Raster capability in Cadra has been enhanced in two ways:

1. Allow the rasterization of all entities in all drawing quadrants in a drawing where no previous raster data exists.
2. Move all raster menu options to a single menu.

The users can now rasterize geometry anywhere on the screen. When the user selects the **Rasterize/All** or **Rasterize/Partial** menu pick they will be given the warning:

“Raster outside pos quadrant moves draw origin”.

If the user picks the Choice (Rasterize) button the raster operation will be completed and if there are entities outside the positive quadrant the draw origin will be moved and the following message displayed:

“Draw origin moved to lower left of drawing”.

Note, that only for a drawing that contains no raster data will the user will be able to select any geometry on the screen (regardless of quadrant) and rasterize it. After that, the raster area will be set and only the new geometry overlapping with that area (in the first quadrant as defined by the new draw mode origin) will be rasterizable. The user will be able to increase the raster area size using the **Raster/Set size** menu but will not be able to adjust the origin.

Cadra GUI Changes:

The **File/Translate/Raster men** menu has been changed. A new **More menu** option has been added which brings up a new submenu containing the raster delete options (**Blank Ras**, **Unblink Ras** and **Delete Ras**).

```
Read opts
Write opts
Read rast
Write rast
Align
Edit
Move
Ovly merge
Raster drw
Raster neg
Rasterize
  All
  Partial
  Dpi
Rast Size
  Set Size
  Region
Erase rast
More menu
Return
```

When **More menu** is chosen the following menu is displayed:

```
Blank Ras
Unblk Ras
Delete Ras

Return
```

Increased Figure Name Size

The maximum size in single-byte characters of a figure name has been increased from 20 to 256. When saving to older format Cadra files figure names will be truncated to 20 bytes preserving name uniqueness. Foreign formats support figure names of various sizes (usually less than 256 characters). Translators for reading and writing these formats have been modified to handle this new figure name size limit and still guarantee figure name uniqueness.

This increase in size has required changing the figure dialogs. The dialogs changed include internal and external figure lists, figure rename and the external figure list in CadraViewCheck.

By default this new Cadra GUI single-column figure list format will be used. However, to accommodate AutoGeometry programs and to allow a two-column listing an environment variable has been introduced to force use of the older two-column format figure list. It is called `FIGURE_FORM_2COLUMNS`. If it is set to one then the two-column format will be used. If it is set to zero or if it does not exist the newer single-column format will be used.

Increased Size of Text Notes

The maximum size in single-byte characters of a text note has been increased from 500 to 100,000. This also means there can be up to 50,000 double-byte characters. Additionally there is a limit of 10,000 lines of text.

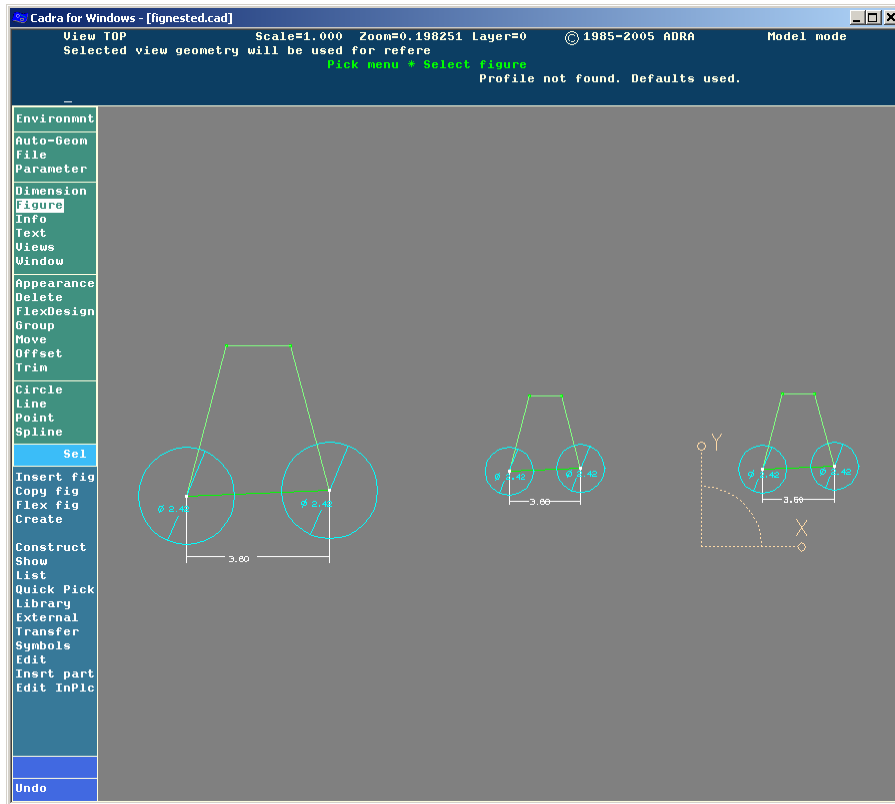
When saving to older format Cadra files text notes will be broken up into notes with less than 800 single-byte characters each. Text notes written out to foreign formats through translators also require similar length alterations.

There is a known problem when saving files to older Cadra formats that contain double-byte strings greater in length than 400 double-byte characters. The result of breaking up such strings is not correct in the older format file. Only the first part of such a string will be correct in the older format file.

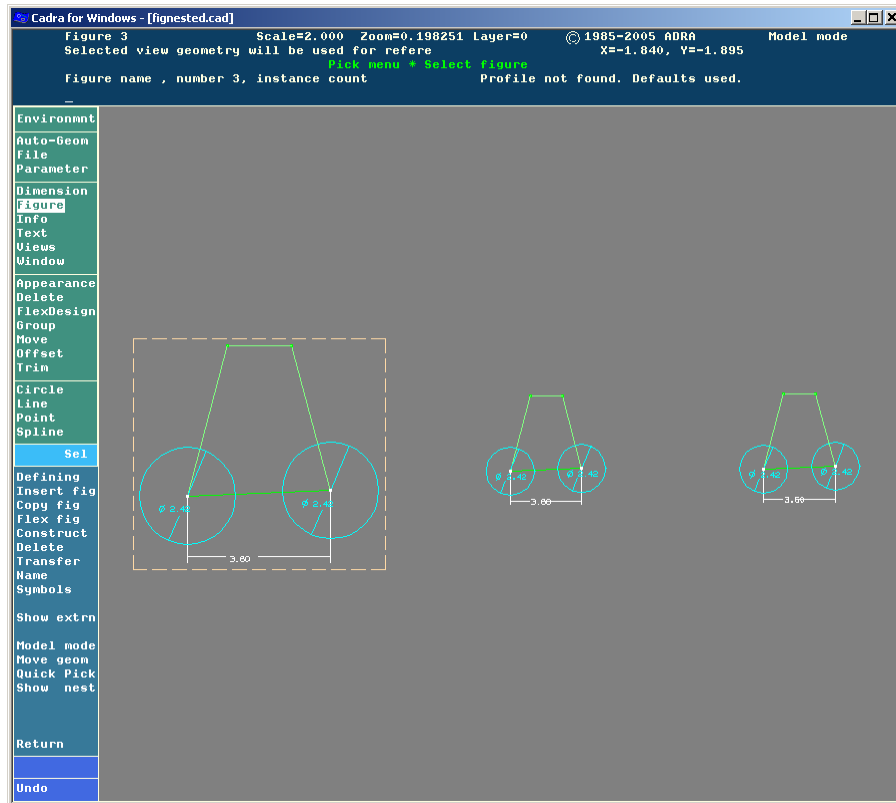
In-Place Figure Editing of Nested Figures

The In-Place Figure Edit feature was added to Cadra in the 2004 release. In that release it is not possible to edit a figure nested within another figure. Cadra 2005 adds the ability to edit nested figures.

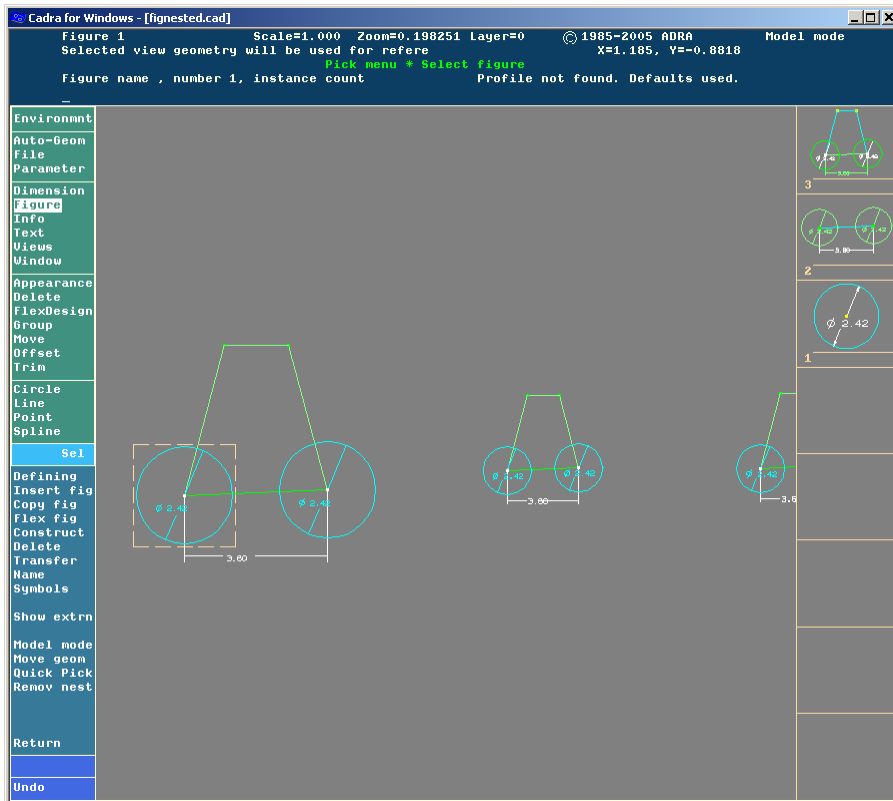
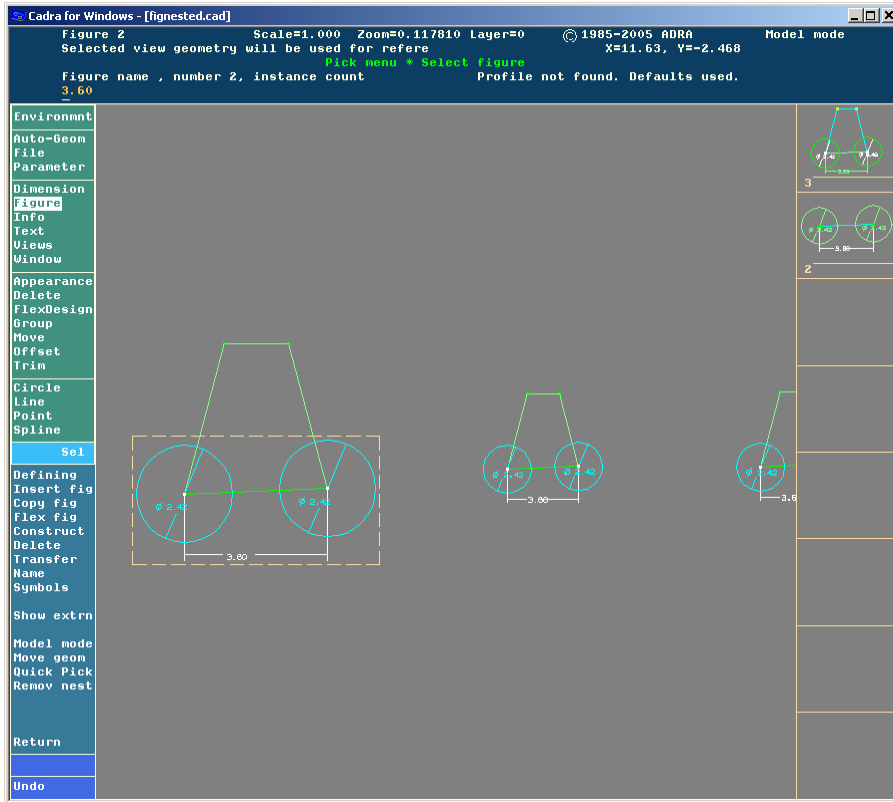
The drawing shown below shows three instances of a figure. The top-level figure contains an instance of another figure that in turn contains an instance of a third figure. This is the drawing before entering the **Edit InPic** function.



When the topmost figure is selected the screen will appear as follows:



Subsequent selects of geometry in more deeply nested figures will choose those nested figures as the following two pictures show. When nested figures are selected small pictures are optionally displayed to the right showing the nesting structure. The display of these pictures is controlled by the new **Show nest / Remov nest** menu pick toggle. When **Show nest** is chosen and there is nesting to be shown the figure nesting pictures will be displayed. When **Remov nest** is chosen any display of nesting figures is removed.



Once the desired nested figure is selected the figure will be editable in the same manner as top-level figures are in-place editable except that geometry in the figure-including view **and** all of the parent figures are referencable during the edit process. This includes the movement of geometry into the figure when **Move geom** is selected on the menu.

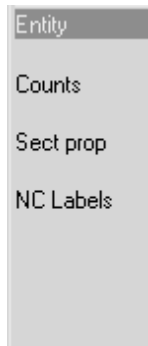
Edit NC Labels

This feature will allow the user to modify the apt labels on geometry. When Generate NC executes, it adds unique labels to all existing geometry in the drawing as well as creating a geometry file for Cadra-NC. These labels are 2 letters based on the geometry type followed by up to 4 numbers. These labels are always invisible in Cadra, but they are important because they preserve associativity between Cadra and Cadra-NC. The next time Generate NC is run, it will preserve all existing labels and only create new labels for unlabeled geometry. This allows the apt program created in Cadra-NC to refer to specific geometry and not have it changed for every engineering change order where the part is modified and Generate NC is rerun.

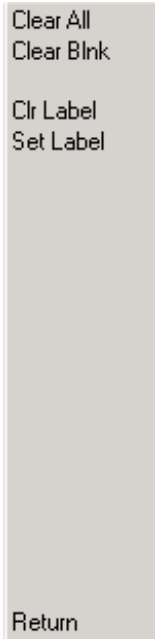
There are a several ways in which the Cadra-NC labels might get lost. Some common known examples are: 1) Copy and paste; 2) drag and drop; and 3) trim divide. Once the label is wiped out, there is no way to modify or remove the labels on existing geometry.

Being able to fix the part in Cadra, saves time because it only needs to be done once and because it is easier to do the fix when you have the part visible on the screen with the labels displayed rather than doing it in a system editor.

A new menu option **NC Labels** will be added to the **Info** menu.



The **NC Labels** option will bring up a new submenu (if the user has an NC license) that will allow the user to modify and clear labels by hand. When the submenu comes up, all labels will become visible. Similarly, all labels will become invisible once again when the menu is exited.



The **Clear All** option will clear the NC labels on all geometry in the entire drawing.

The **Clear Blnk** option will clear the NC labels on all geometry that is blanked in the entire drawing.

The **Clear Label** option will clear the label(s) on selected piece(s) of geometry. The geometry may be selected by keying in the label, selecting the geometry by the mouse or by the IMS menu.

The **Set Label** option will allow the user to set a specific label on a selected piece of geometry. The geometry can be selected by either keying in the old label or by selecting the geometry with the mouse. The system will check for invalid and duplicate labels and issue the appropriate error messages. However, it will not check to see if the user is following the convention used by Generate NC to assign labels, i.e. PTxxxx for points and LNxxxx for lines.

Note: Some care must be taken with using the **Set Label** option. If used improperly it can cause problems when Generate NC is run in the future. For example, if the user assigns a label such as PT234 to a line, Generate NC could turn around and assign PT234 to an unlabeled point the next time it's run. The user should either follow the convention used by Generate NC or use completely different labels.

Note: Another potential problem occurs because Generate NC does not fill in holes in the label-numbering scheme. If a user assigns the label P99999 (or for that matter any label ending in 99999) to a point, then Generate NC will run out of labels for points. Generally, it is best to stay away from assigning labels with large numbers in them.

The **Set Label** option should be viewed as major surgery done only as the last resort. It is meant for restoring labels to geometry where Cadra has removed them (as in Trim Divide, Cut and Paste, or Drag and Drop).

The convention used by Generate NC for assigning labels is listed below (xxxx indicates a number between 1 and 9999; xxxxx indicates a number between 10000 and 99999):

PTxxxx and Pxxxxx for points
LNxxxx and Lxxxxx for lines
CRxxxx and Cxxxxx for circles and arcs

ELxxxx and Exxxxx for ellipses
TRxxxx and Txxxxx for torus's
PLxxxx for planes
SLxxxx and Sxxxxx for splines
NBxxxx and Nxxxxx for nurbs
BSxxxx and Bxxxxx for b-surfaces
RLxxxx and Rxxxxx for ruled surfaces
PRxxxx for parabolas
HYxxxx and Hxxxxx for hyperbolas
SPxxxx for spheres
EDxxxx for ellipsoids
COxxxx for circular cones
CExxxx for elliptical cones
CYxxxx for circular cylinders
ECxxxx for elliptical cylinders
PCxxxx for parabolic cylinders
HCxxxx for hyperbolic cylinders
HIxxxx for hyperboloid of 1 sheets
HZxxxx for hyperboloid of 2 sheets
PExxxx for elliptic paraboloids
PHxxxx for hyperbolic paraboloids
WPxxxx and Wxxxxx for work-planes

Installing the Cadra 2005 Release

Recommended Minimum System Configuration

HP/700 Series Systems:

- HP-UX 10.2, 11.0 or 11.11
- 32 MB RAM
- 70 MB free disk space (28 MB is for Cadra documentation)

Sun Systems:

- Solaris 2.6 (SunOS 5.6), 5.7 or 5.8
- 32 MB RAM
- 80 MB free disk space (28 MB is for Cadra documentation)

Before You Begin Installation

- Have your Product Authorization License (PAL) available during the installation procedure.
- For detailed information on installation options including license installation, print a copy of the **Installation Guide** in HTML format on the top level of the CD.

Installation Media

Multiple platform and languages versions of Cadra are available on the CD-ROM.

Cadra Installation

1. Log on as root. Do not change user to superuser. You must be logged on as root!
2. Create a hard disk directory to hold the Cadra files. For example:

```
% mkdir /usr/cadra
```

3. Insert the CD into the CD-ROM drive and create the "mount point," as described in Mounting the CD-ROM.
4. Go to the directory where the Cadra installation will go (created above):

```
% cd /usr/cadra
```

5. Copy the kit files off the CDROM into the installation directory:

```
% cd tar -xvf /cdrom/unix/<tarfile>
```

where `/cdrom/unix` is the CDROM directory and `<tarfile>` is either `solaris2005.tar` or `hpux2005.tar`.

Note: Some machines may have a `/CDROM` directory. Check with your System Administrator to determine the name of your CD-ROM directory.

6. Run the installation script by typing `./install` followed by the name of the directory you created in Step 2. For example:

```
./install /usr/cadra
```

7. Once you complete the full installation, activate the software by executing the following commands:

```
%rehash
```

```
%cadra
```

The Cadra installation attempts to detect the type of operating system running on your workstations in order to extract the appropriate Cadra software from the CD-ROM. If the operating system is not detected automatically, follow the procedure described in the topic *Installing to UNIX Platforms Not Detected Automatically*.

Globetrotter License Installation

If you choose Globetrotter licensing then you need to do the following:

- For dedicated licenses perform steps 3-7.
 - For clients of floating licenses just do step 8.
 - For floating license servers perform all steps except 8.
1. Determine if you will be using dedicated licenses or floating licenses. If you will use floating licenses you will additionally need to decide if you will be using a single license server or three redundant license servers.
 2. If you are using floating licenses install the Softech FLEXlm License Server on the selected server system(s). The Softech FLEXlm License Server is provided in a separate tar file (hpflexlm.tar for HP-UX and sunflexlm.tar for Sun Solaris). Untar this file into a directory (i.e. flexlm) beneath the Cadra install directory. This package includes the FLEXlm User Guide that documents all the utilities included in the package.
 3. Send the name and hostid (output from **lmhostid**) of each system requiring a license to Softech. These are the systems where the dedicated licenses are to be used or the systems to be used to serve floating licenses.
 4. Softech will issue license files (*.lic) to you via E-Mail.
 5. Save the .lic file(s) you receive to a directory on the licensed systems. If you are using floating licenses this should be the directory that was specified when the license server software was installed as a service.
 6. Set the ADRA_NLS symbol to point to the full file specification of your nls.txt file.
 7. Create the nls.txt file. If you are using dedicated licenses this is the last step. Place the following line in the nls.txt file:
 .globetrotter <path>
where <path> is the absolute path to the directory where the *.lic file(s) are. Do not include a file name in this path.
 8. If you are using floating licenses you need to create a *.lic file on each client system that points to the server system(s) for a license. This file should contain the following two lines:
 SERVER <server-name> <server-hostid>
 USE_SERVER
Where <server-name> is the network name of the license server and <server-hostid> is the server hostid. If using three redundant license servers this file should contain three SERVER lines specifying the three license servers.
 9. If you are using floating licenses, start the FLEXlm License Manager service on the server systems. To start the FLEXlm server issue the following command
 % lmgrd -c <path>
where <path> points to the directory where you put the .lic license file(s).
 10. A shell script is provided to help setup your system to automatically start the **lmgrd** daemon upon a system reboot. It is called **cadralmgrd**. It assumes you have installed **lmgrd** in /usr/cadra/bin/flexlm and that you will also place the .lic files there. If this is not true you will need to edit this file. The file should be placed in the init.d directory and a

link should be set from the rc2.d directory. In the following <root-dir> is /sbin on HP-UX and /etc on Sun Solaris and <number> is 900 on HP-UX and 99 on Sun Solaris. After cd'ing to the directory where you have initially placed (and possibly edited) the cadralmgrd file issue the following commands:

```
% cp cadralmgrd <root-dir>/init.d/cadralmgrd
% cd <root-dir>/rc2.d
% ln -s <root-dir>/init.d/cadralmgrd S<number>cadralmgrd
```

11. If you are using floating licenses, you can read the FLEXlm End User's Guide for more information on FLEXlm Utilities and options. If you are interested in additional FLEXlm monitoring utilities you will need to contact Globetrotter directly (www.globes.com).

If you have any questions or concerns regarding updates to Cadra licensing, please contact your local SofTech representative or Cadra/SofTech Customer Service at 1-800-321-2372.

Corrective Maintenance

Every release of Cadra addresses corrective maintenance issues our customers and partners report as problems or issues throughout the world. The table below lists the most significant problems and issues addressed for this release:

SOFTECH SPR NUMBER	DESCRIPTION
51114	Would like to be able to change line/text weight/type in all views at the same time
51831	Customer would like the ability to edit xhatch
52013	In NC enhance windowing options to include viewing directions back, left, bottom
52480	Provide the ability to select items in all views if necessary
53137	Would like to fill in the note of over 1000 characters in Japanese
53139	Setup the "connect tolerance" parameter on Cadra GUI
53175	The rectangle by "Fit Win" window operation is invisible
53187	Use 'GETSEL\$', we should not be able to select function menu
53751	Basic box on a dimension shifts under certain conditions
53790	Toggle Visible should toggle visible, add a different toggle for layer locked on or off.
54043	Currently the length of the names of the Cadra internal figures is limited to 20 characters
54063	Geometry highlight using delete, blank is confusing
55046-48,55665-66	General fixes to Catia files
55051	Would like a way to cancel xhatch operation
55096	Read in AutoCAD file there is stray geometry on the drawing
55135	Residual image remains on display when entities are moved
55294	Dimension arrow type not maintained during DXF translation
55322	Cannot create a fractional tolerance using these steps
55397	Add ability to clear or set label in the generate NC functionality
55469	Dimension separated from leader after dimension change
55566	Would like cutouts to automatically update if boundaries are stretched
55631	Error displaying cutouts in this file
55772	Cutout entities may or may not display depending on windowing zoom factor
55819	DXF/DWG triangles not reading into AutoCAD from Cadra
56004	Get impossible geometry error trying to read file into Cadra
56064	Insight not targeting correctly
56075	Cadra3.txt issue on Japanese XP Pro
56131	Error using the seamless host file open dialog try to rename or delete a file
56139	Tangent circles leave gap when trimmed
56175, 56203	Write IGES, and get internal software failure
56215	Lost the ability to repeat a move, stretch on a box that is also a cutout
56228	Over 10000 internal figures, number does not appear correctly in the number field
56229	Delete unused with over 10000 figures, the fig above 9999 are not deleted
56233	Having problems in redrawing and plotting some entities
56235	Sequence of operations causes figure FIG to be copied two times
56243	Read in DXF file from ME10, xhatch is missing
56270	If readnm is less than 46, the name of the figure does not show in fig list

56272	DXF software failure error when reading in exported IDEAS 11 NX Series M1
56273	Autogeometry error at line 54, the name for figure 1 could not be extracted
56306	Read in ME10 DXF file, stretch of xhatch changes angle to 0
56315	Text overlaps when saving as previous version
56317	Read in DXF file the R dimensions are missing from a figure in the TOP view
56428	Cancel PDF plot would remove the CAD file

Platform Support

This release has been qualified for the platforms listed in the table below. The CD distributed with this update release contains software for all the supported platforms.

Workstation	Operating System	Revision Level
Sun Sparcstation	Sun Solaris	2.6 (SunOS 5.6), 5.7, 5.8
Hewlett Packard	HP-UX	10.2, 11.0, 11.11

Copyright (c) 1984 - 2005 SofTech, Inc.

All rights reserved.

PROPRIETARY RIGHTS NOTICE: No part of this material may be reproduced or transmitted in any form or by any means, electronic, mechanical, or otherwise, including photocopying and recording or in connection with any information storage or retrieval system, without the permission in writing from SofTech, Inc.

Cadra-III is a registered trademark of SofTech, Inc. Cadra, Cadra-II, Cadra 3D, Cadra PC, CadraViewCheck, CadraWire, CadraWorks, CadraMCD, Cadra PDM, DesignGateway, ADRA/Open, ADT, Autogeometry, FlexDesign, and The Vault are trademarks of SofTech, Inc. All other product names and services identified throughout this documentation are trademarks or registered trademarks of their respective companies.

SofTech, Inc.
Two Highwood Drive
Tewksbury, MA 01876, USA
Telephone: 978.640.6222
Fax: 978.858.0440
Web Address: www.SofTech.com