



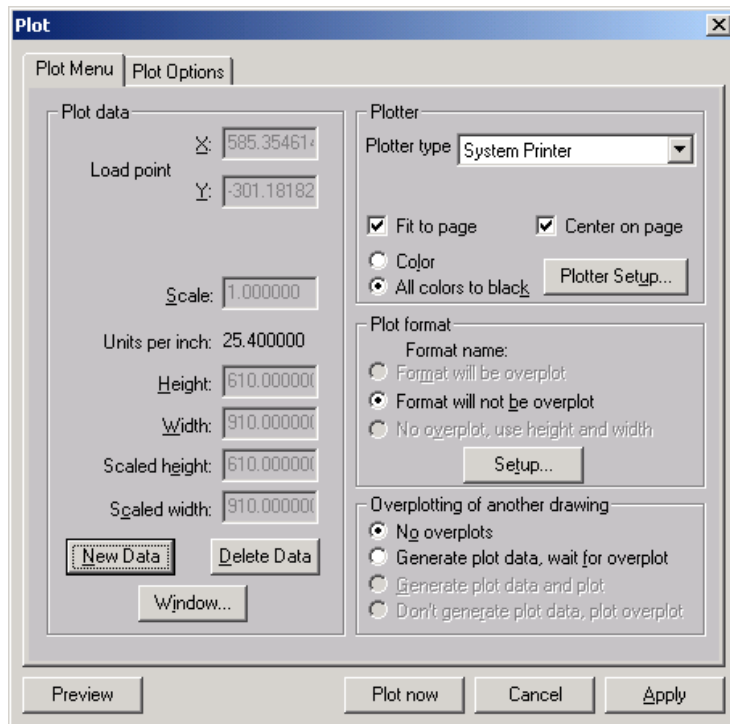
Cadra Maintenance Release Release Notes

SofTech is pleased to provide you with this Cadra Maintenance Release. This maintenance release includes a number of enhancements in addition to some high priority corrections. This document will briefly review the new features and changes to Cadra. A summary of the installation process is also included toward the end of the document. The enhancements include:

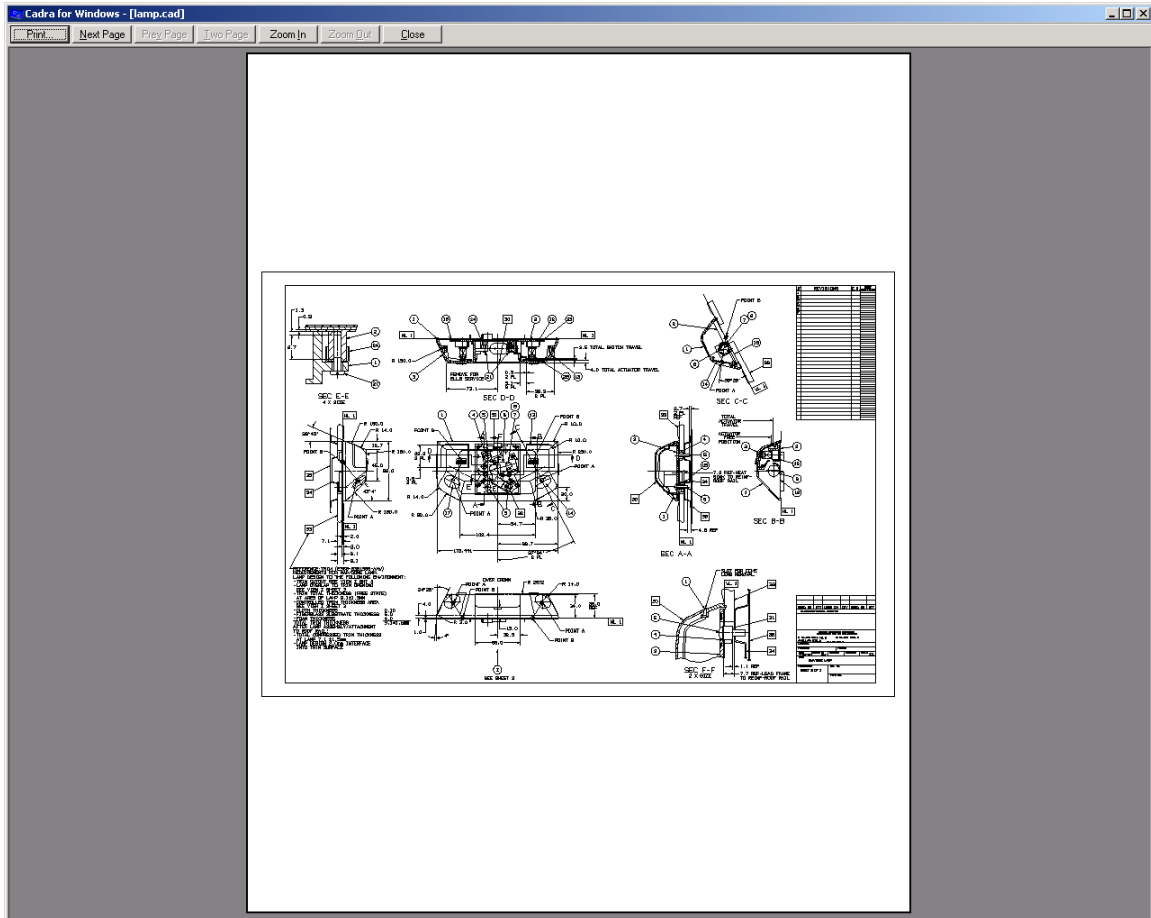
1. A new Windows **Plot Preview** function.
2. Some new browse buttons for Autogeometry and other functions.
3. Error messages are now displayed in **red** in the Windows GUI.
4. Geometry in AutoCAD viewports is now clipped to the viewport boundaries.
5. Increased the number of files that can be submitted to a background translation job.
6. Added support for periods in file names.
7. Added a new **Delete All** function for cutouts.
8. Added support for USB dongles.

New Plot Preview on Windows

A new plot preview function is available when using the Windows user interface. When a plot is set up you can choose the Preview button to preview what the plot will look like before doing the plot. The new Preview button is on the lower left corner of the Plot dialog.

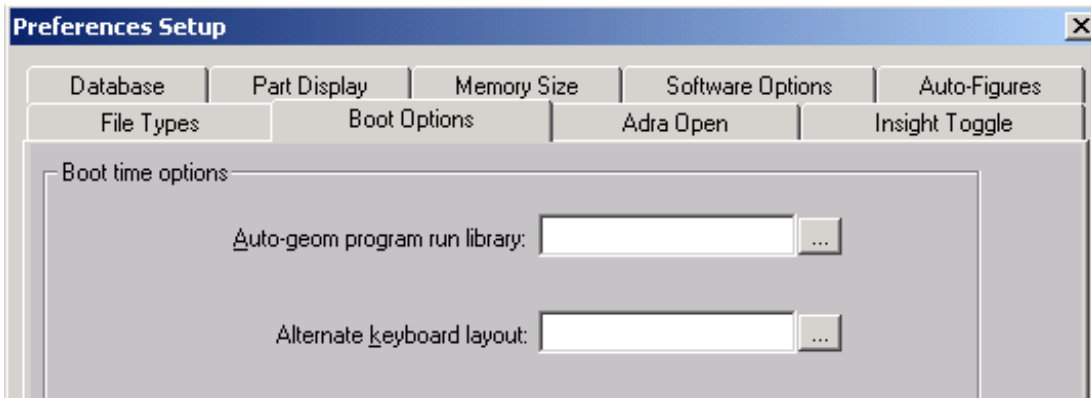


When the Preview button is chosen a plot preview window is displayed:



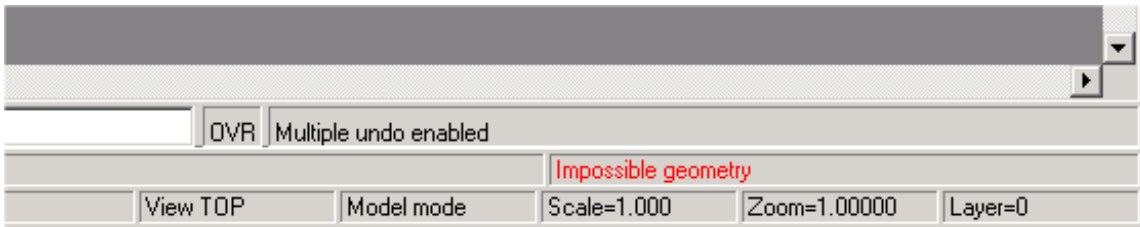
New Browse Buttons

New browse buttons have been added to the Boot options tab of the Setup/Preferences dialog. They appear as an ellipsis button next to the input fields for Autogeometry program libraries and the alternate keyboard layout.



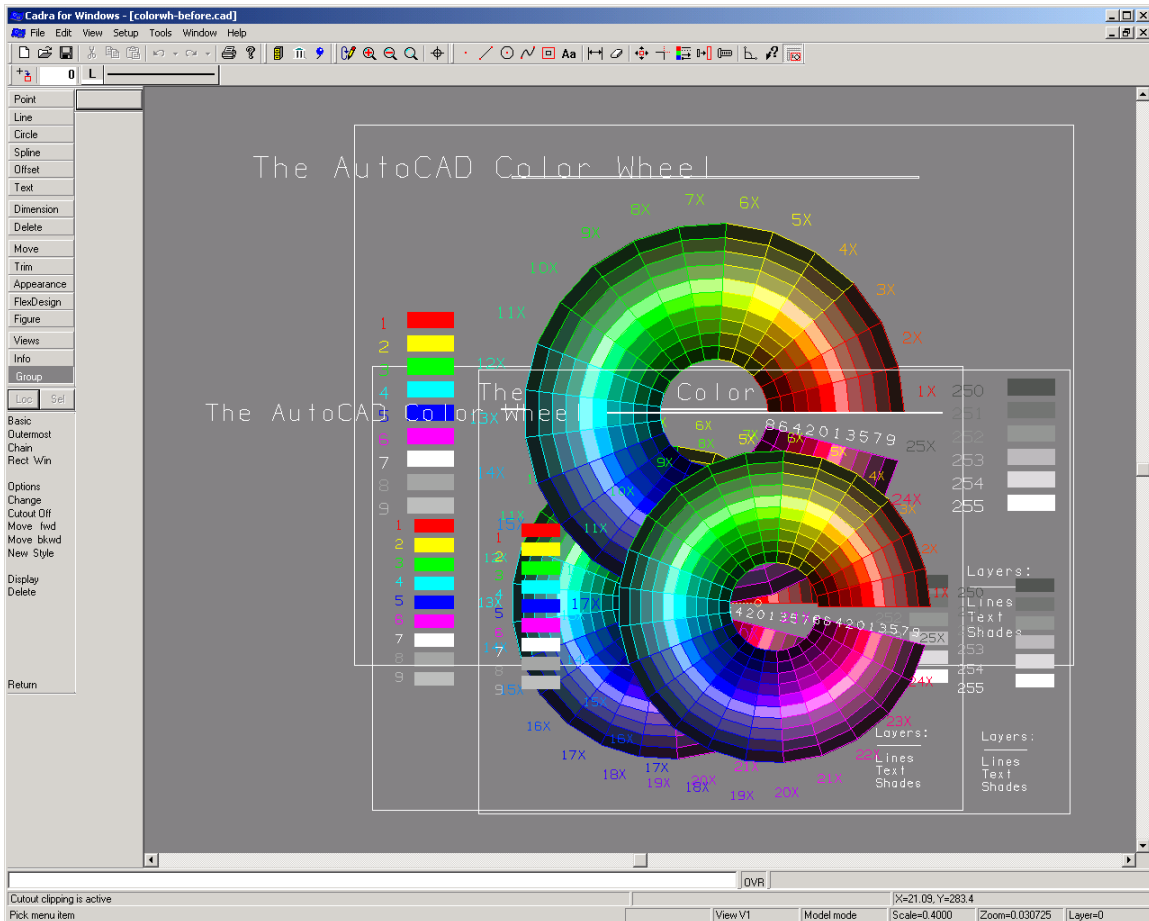
Error Messages Displayed in Red

Error messages are now displayed in the color red in the Windows GUI error message field like the following “Impossible geometry” error.

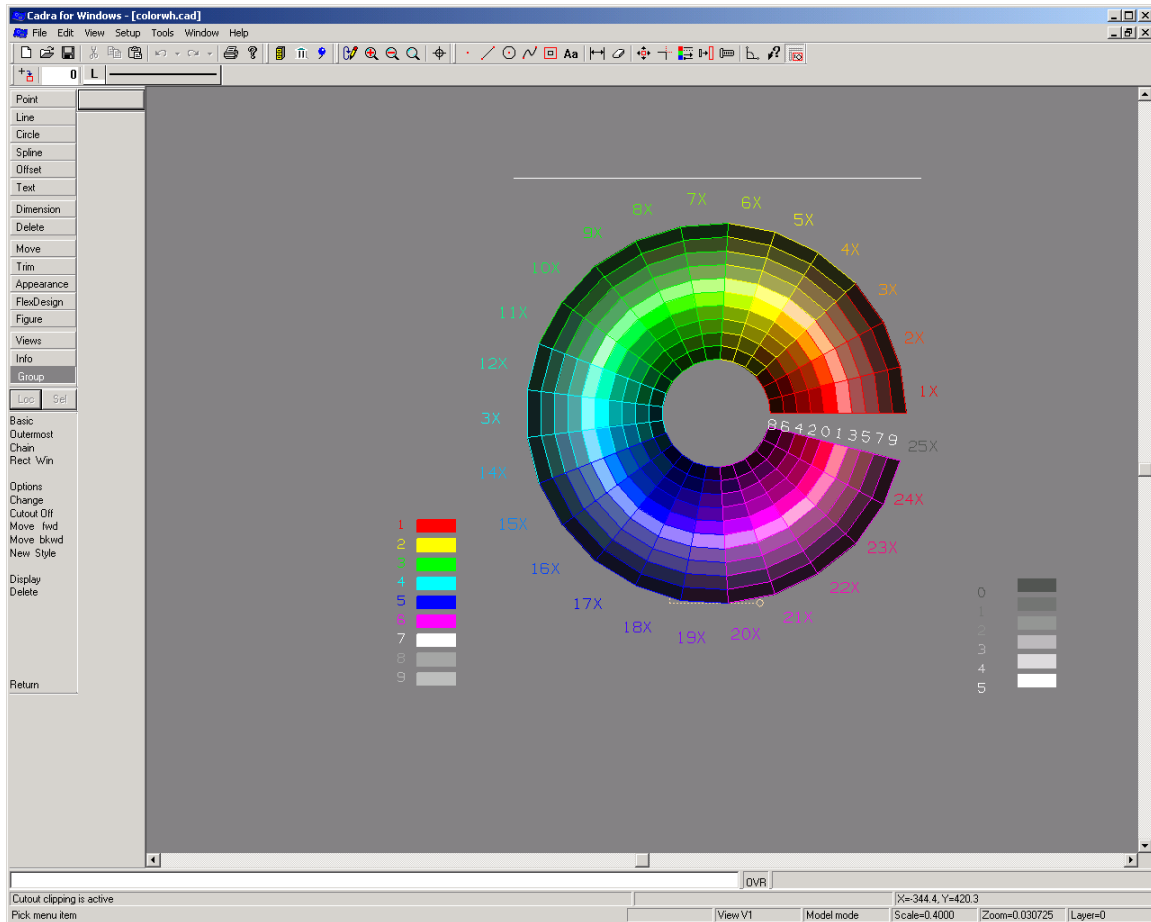


Geometry in AutoCAD Viewports Now Clipped to Viewport Boundaries

The following shows a file with multiple viewports without viewport clipping:



The following shows the same file with multiple viewports with the new viewport clipping feature:



Increased Files Handled by Background Translation

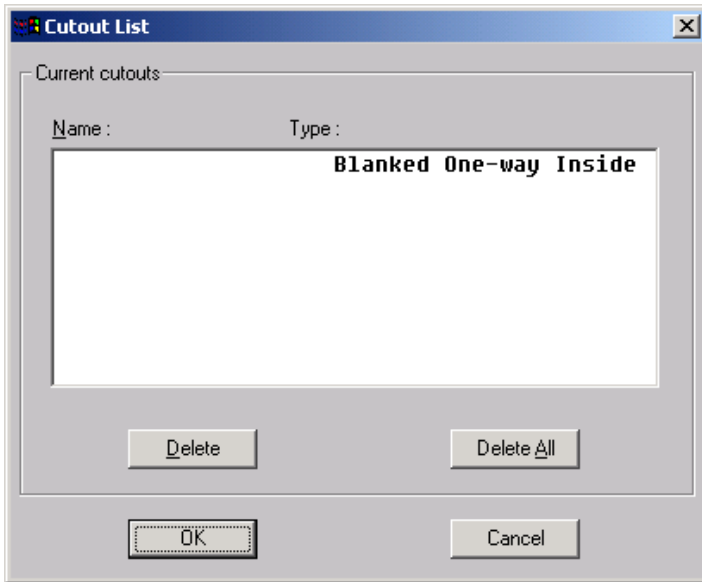
The number of files that can be handled in a single background translation job has been increased.

Added Support for Periods in Filenames

The names of files handled by Cadra on Windows can now contain periods.

Added a new Delete All function to Group/Cutout

A new **Delete All** function has been added to allow the deletion of all existing cutouts at once. The function is available as a choice button pick in the **Group/Cutout/Delete** function or as the Delete All button on the dialog displayed by the **Group/Cutout/Display/List names** menu pick:



Added Support for USB Dongles

USB dongles are now supported for Cadra licenses.

Installing this Cadra Maintenance Release

Recommended System Requirements

Windows Systems:

- Microsoft Windows XP Pro SP1, 2000 (SP2), NT 4.0 (SP3 or higher) or Windows 98
- Intel Pentium-based computer
- 64 MB RAM
- 65 MB free disk space
- Screen resolution setting of 1024 x 768

Before You Begin Installation

- Have your Product Authorization License (PAL) available during the installation procedure.
- On Windows platforms, close all other programs before proceeding.
- Cadra requires either Internet Explorer 3.02 or greater, or Netscape Navigator 3.0 or greater to read the help files.
- For detailed information on installation options including license installation, print a copy of the **Installation Guide** in HTML format on the top level of the CD.

Installation Media

Multiple platform and languages versions of Cadra are available on the CD-ROM.

Cadra Installation

Windows Systems:

These instructions assume an English installation on Intel, with d:\ as the CD drive.

1. Log on to an Administrator account or one with Administrator privileges.
2. Insert the Cadra CD into the CD-ROM.
3. If autorun is active, the installation procedure should start automatically.
4. If you do not have autorun capabilities:
 - a. Click the **START** button and select **RUN**.
 - b. Type d:\setup.exe in the **OPEN** box.
 - c. Click **OK**.
5. Follow the Install Shield wizard to complete the installation.
6. After you have installed Cadra, reboot your system.

Troubleshooting a Hardware Lock Problem:

If your hardware lock is creating a host ID of host-ID 0000000, try the following steps. If this solution doesn't work, contact Cadra/SofTech Customer Service at 1-800-321-2372.

1. Open Windows Explorer and go to the **CADRA\DRIVERS\WIN_NT** directory (or Win9x if you are running Windows 98 instead of XP Pro or NT).
2. Double click **SETUPX86.exe** (or **sentw9x.exe**).
3. Select **FUNCTIONS / INSTALL SENTINEL DRIVERS** (the path should be the directory listed above).
4. Click **OK**.
5. Before you reboot make sure that your registry entry (**AFH000**) is set for **2**. This value can be set in Cadra run using the older Cadra GUI. Select **Parameter/License** and then set the **HardLock/Local Card** toggle to enable a hardware lock. Alternatively, continue with the following steps:
 - a. Select **START / RUN / REGEDIT / OK**
 - b. Select **EDIT / FIND**
 - c. Key in AFH000
 - d. Double click the **a/b** icon to change default value to a **2**

You may need to reboot your system.

Corrective Maintenance

Every release of Cadra addresses corrective maintenance issues our customers and partners report as problems or issues throughout the world. The table below lists the most significant problems and issues addressed for this release:

SOFTECH SPR NUMBER	DESCRIPTION
53252	Handle foreign language characters in TrueType fonts.
54016	Modified the Explode Text function to handle Kanji characters
54061	Fixed file name processing to handle more 2-byte characters
54458	Fixed the reading of this DWG file which contains viewports.
54577	Fixed coordinate dimensions so they are more editable in AutoCAD.
54694	Changed Cadra GUI Toggle Layer Visibility by group to ignore the active layer
54708	Improved cutout and set management. Empty sets are now removed by the Delete Pack operation. A new Delete All cutouts function has been added.
54714	Fixed Cadra GUI file lists to properly display file extensions and descriptions.
54719	Empty sets are now removed by the Delete Pack operation.
54721	Fixed problem where deletion of crosshatch entities was causing a crash of Cadra.
54722	Fixed the read of a file which has a reference to a non-existent figure
54723	Fixed problem where deletion of dimension entities was causing a crash in Cadra.
54731	Fixed crash when Undo selected after File/Plot chosen.
54739	Added foreign language translations of the Cadra GUI setup font dialog.
54750	Fixed the write of a DWG file to AutoCAD 2002 format so it is readable by AutoCAD.
54758	Fixed a figure name limit problem causing unresolved external figures.
54760	Fixed problem with the reading of arcs with the width option ON from DWG files.
54761	Fixed problem where no dimensions show up in viewports in AutoCAD files written out from Cadra.
54765	Fixed the deletion of empty sets when changing views.
54766	Improved the performance of DWG file write when there are many AutoCAD blocks.
54797	Added a clock cursor when deleting many sets.
54809	Database corruption error occurring when selecting Undo after a Move Translate function.
54819	Return from IMS Sel(ection) menu on non-English systems was not working.

Platform Support

This release has been qualified for the platforms listed in the table below. The CD distributed with this update release contains software for all the supported platforms.

Workstation	Operating System	Revision Level
Intel Pentium PCs	Windows XP Pro	Service Pack 1
Intel Pentium PCs	Windows 98	All
Intel Pentium PCs	Windows NT	4.0 with Service Pack 3 or higher
Intel Pentium PCs	Windows 2000	Service Pack 2

Copyright (c) 1984 - 2003 SofTech, Inc.

All rights reserved.

PROPRIETARY RIGHTS NOTICE: No part of this material may be reproduced or transmitted in any form or by any means, electronic, mechanical, or otherwise, including photocopying and recording or in connection with any information storage or retrieval system, without the permission in writing from SofTech, Inc.

Cadra-III is a registered trademark of SofTech, Inc. Cadra, Cadra-II, Cadra 3D, Cadra PC, CadraViewCheck, CadraWire, CadraWorks, CadraMCD, Cadra PDM, DesignGateway, ADRA/Open, ADT, Autogeometry, FlexDesign, and The Vault are trademarks of SofTech, Inc. All other product names and services identified throughout this documentation are trademarks or registered trademarks of their respective companies.

SofTech, Inc.
Two Highwood Drive
Tewksbury, MA 01876, USA
Telephone: 978.640.6222
Fax: 978.858.0440
Web Address: www.SofTech.com